



KARIONG OVAL RECREATION AREA

DRAFT CONCEPT | DESIGN WORKSHOP
MAY 2021



CONVIC

WHO WE ARE...

CONVIC

OVER 700 SKATE + YOUTH SPACES



HERE

THERE

+ EVERYWHERE

AGENDA

PRESENTATION:

- 1 | **PRESENTATION**
- 2 | **QUESTIONS**
- 3 | **QUESTIONNAIRE**
- 4 | **DESIGN WORKSHOP**
- 5 | **PRESENT YOUR IDEAS**
- 6 | **SUMMARIES**





ENGAGE

CREATE

RECONNECTING
COMMUNITIES THROUGH
YOUTH INCLUSIVE
PUBLIC SPACE

ACTIVATE

DESIGN
PROGRAM

PRE-DESIGN CONSULTATION



DRAFT CONCEPT DESIGN



CONSULTATION

CONCEPT REVIEW



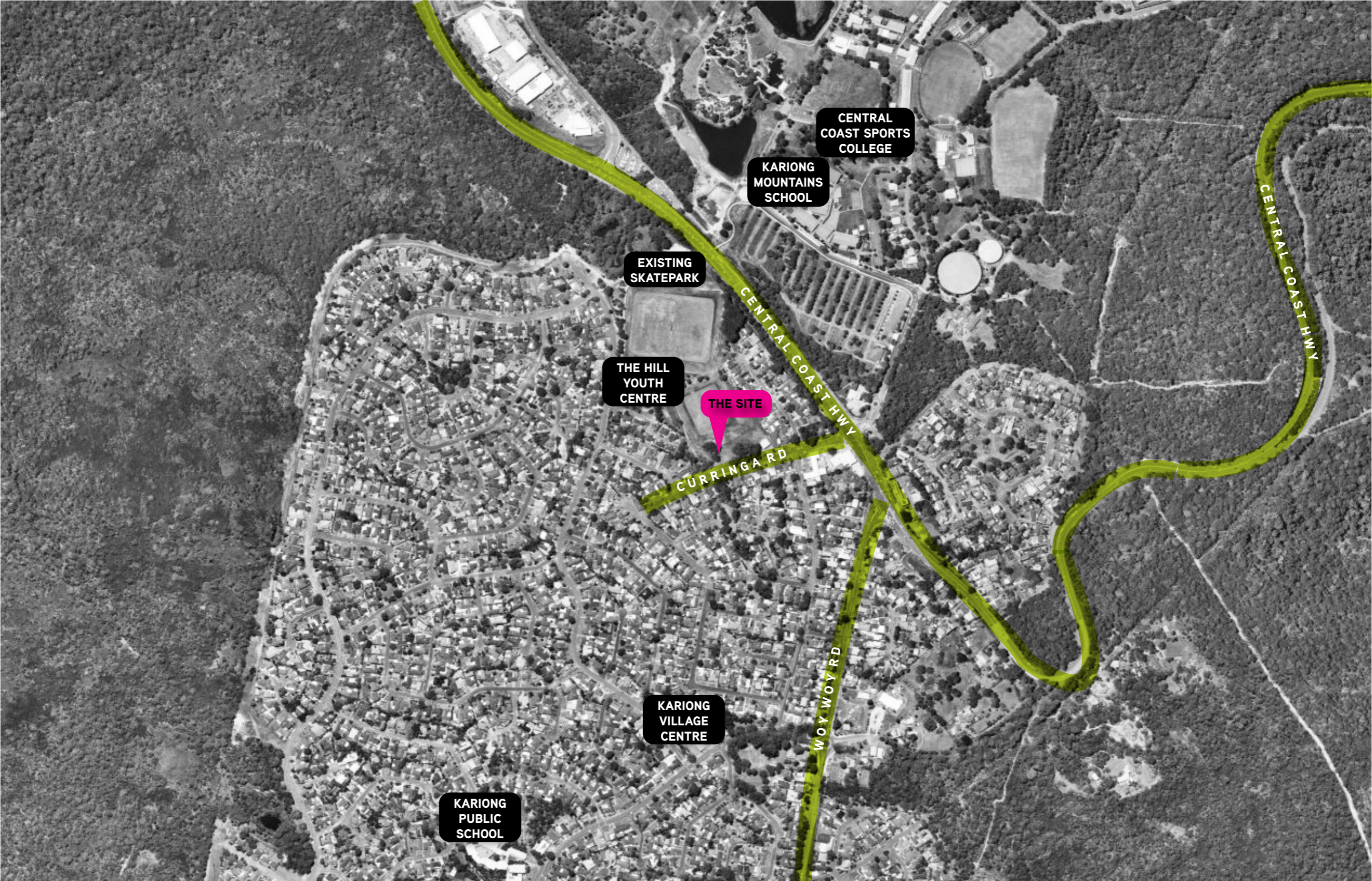
FINALISED CONCEPT



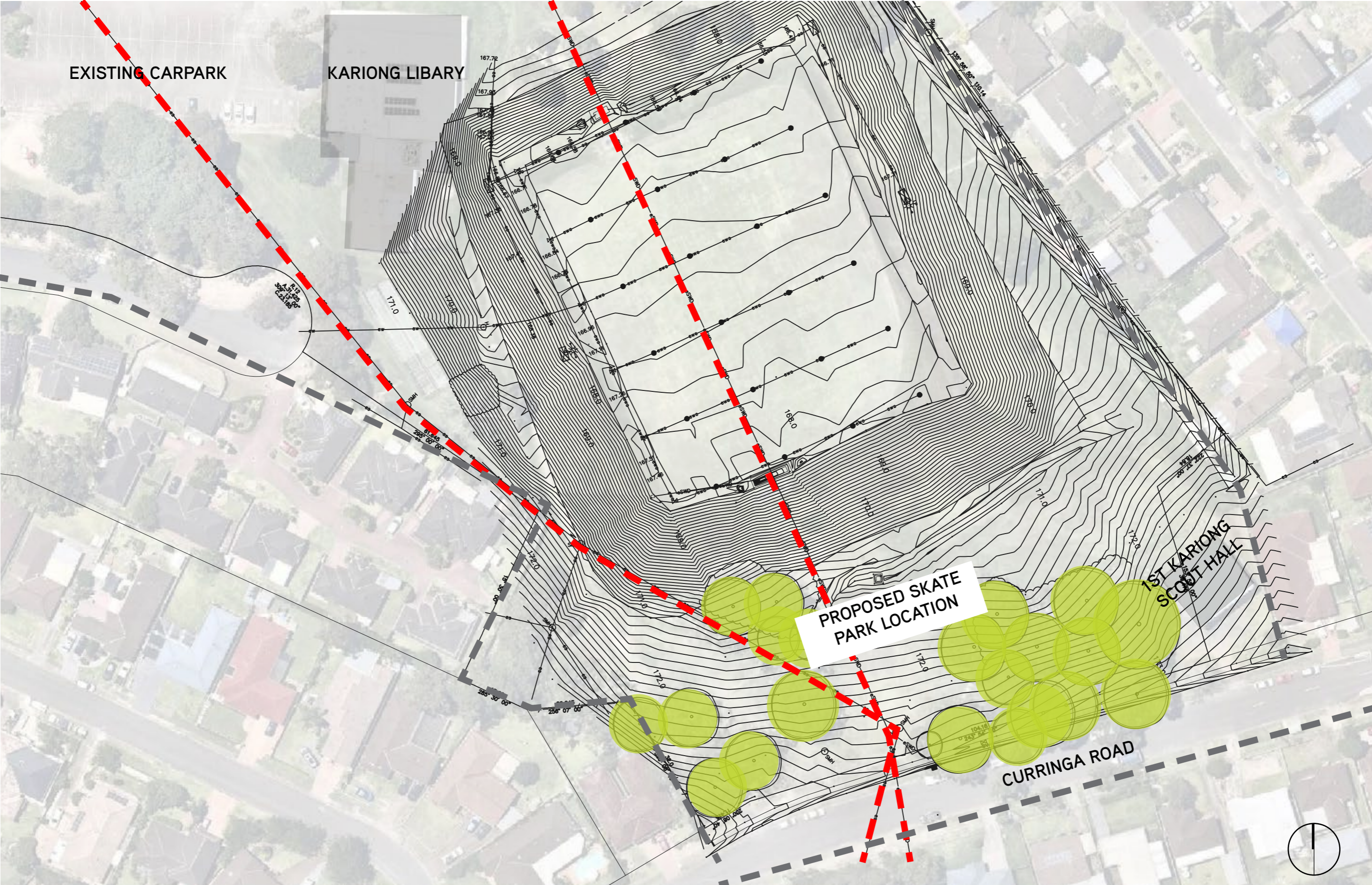
D&C TENDER

PROJECT
BACKGROUND

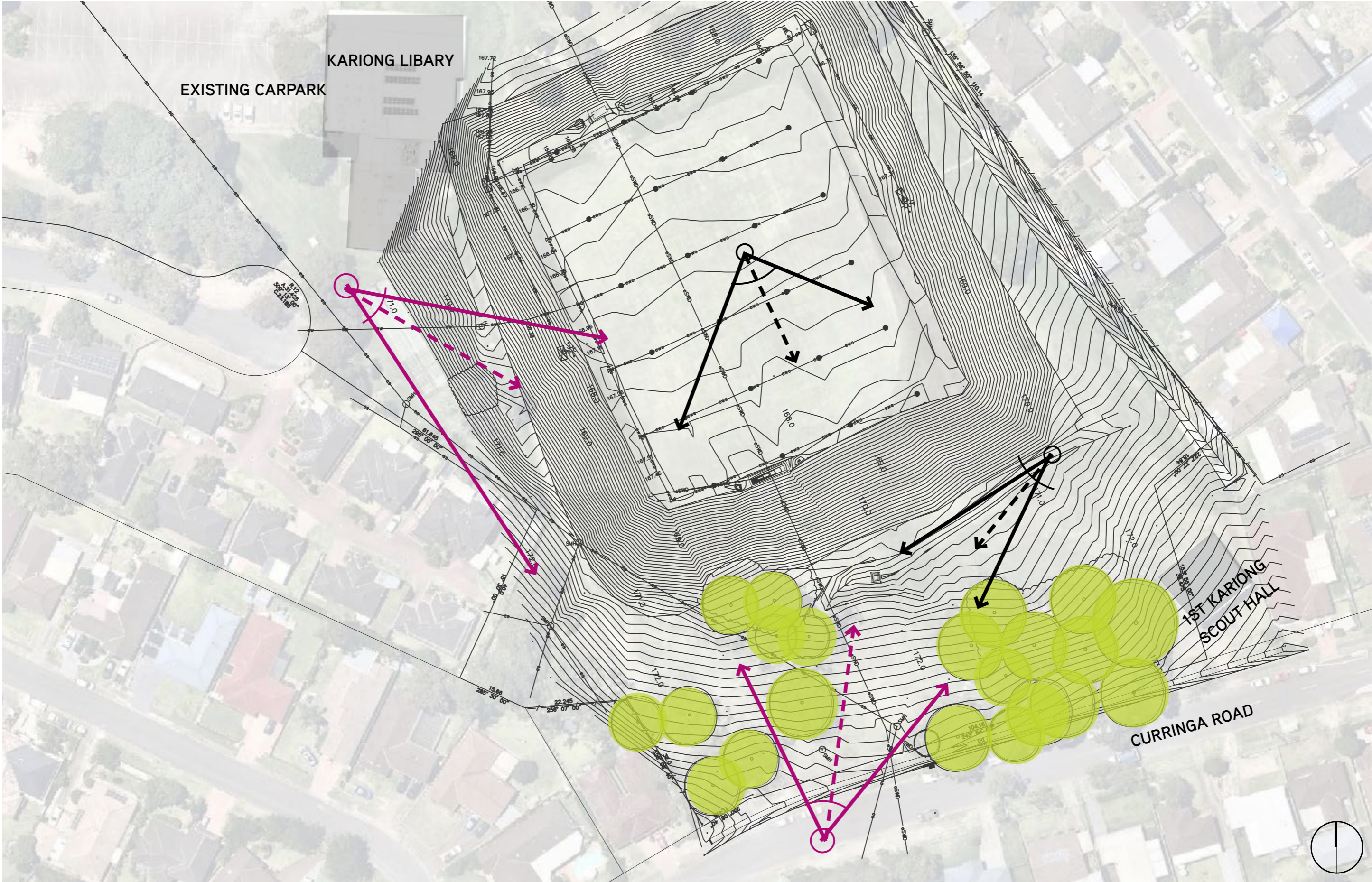
THE SITE - REGIONAL CONTEXT



THE SITE - BUILT ENVIRONMENT



THE SITE - VIEWS



THE SITE - VIEWS



THE SITE - CIRCULATION + ACCESS



EXISTING **SKATE**
CONTEXT...

SURROUNDING SKATEPARKS



GOSFORD SKATEPARK - 6KM NE



KINCUMBER SKATEPARK - 10KM SE



UMINA BEACH SKATEPARK - 11KM S



BANJO'S SKATEPARK - 14KM E



BERKELEY VALE SKATEPARK - 16KM NE



BATEAU BAY SKATEPARK - 18KM E



THE ENTRANCE SKATEPARK - 21KM NE



AVALON SKATEPARK - 23KM S



LALOR SKATEPARK - 50KM SW

EXISTING SKATEPARK





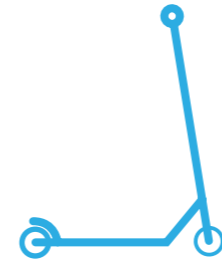
**CONSULTATION
FEEDBACK**

PRE-DESIGN CONSULTATION OUTCOMES:

302
PARTICIPANTS



136 WERE
SCOOTER RIDERS



36%
INTERMEDIATE RIDERS



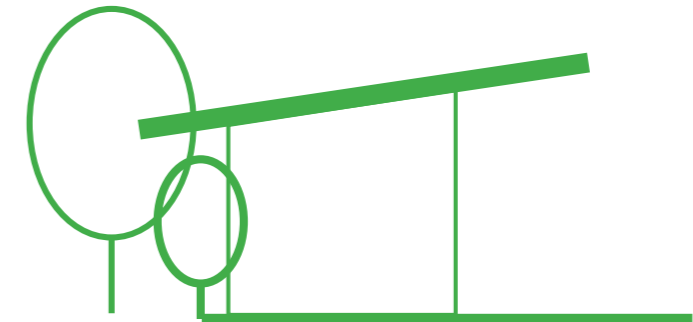
73 PEOPLE WANT
TO SEE A MIX
OF STREET
AND TRANNY
WITH A HIGHER
PREFERENCE FOR



MOST POPULAR TIME TO RIDE = 3PM - 7PM



MAJORITY OF PARTICIPANTS
INDICATED SHADE + DRINKS
FOUNTAIN ARE MOST IMPORTANT



EXISTING SKATE PARK:

NOT GOOD FOR CHILDREN POOR LOCATION
DAMAGED
LITTER AS NO BINS NO SEATING BORING
ANTI SOCIAL BEHAVIOUR
TOO SMALL BAD DESIGN
NO VARIETY THE RAILS
VANDALISM NOT ALLOWANCE FOR SKILL PROGRESSION
NO LIGHTS

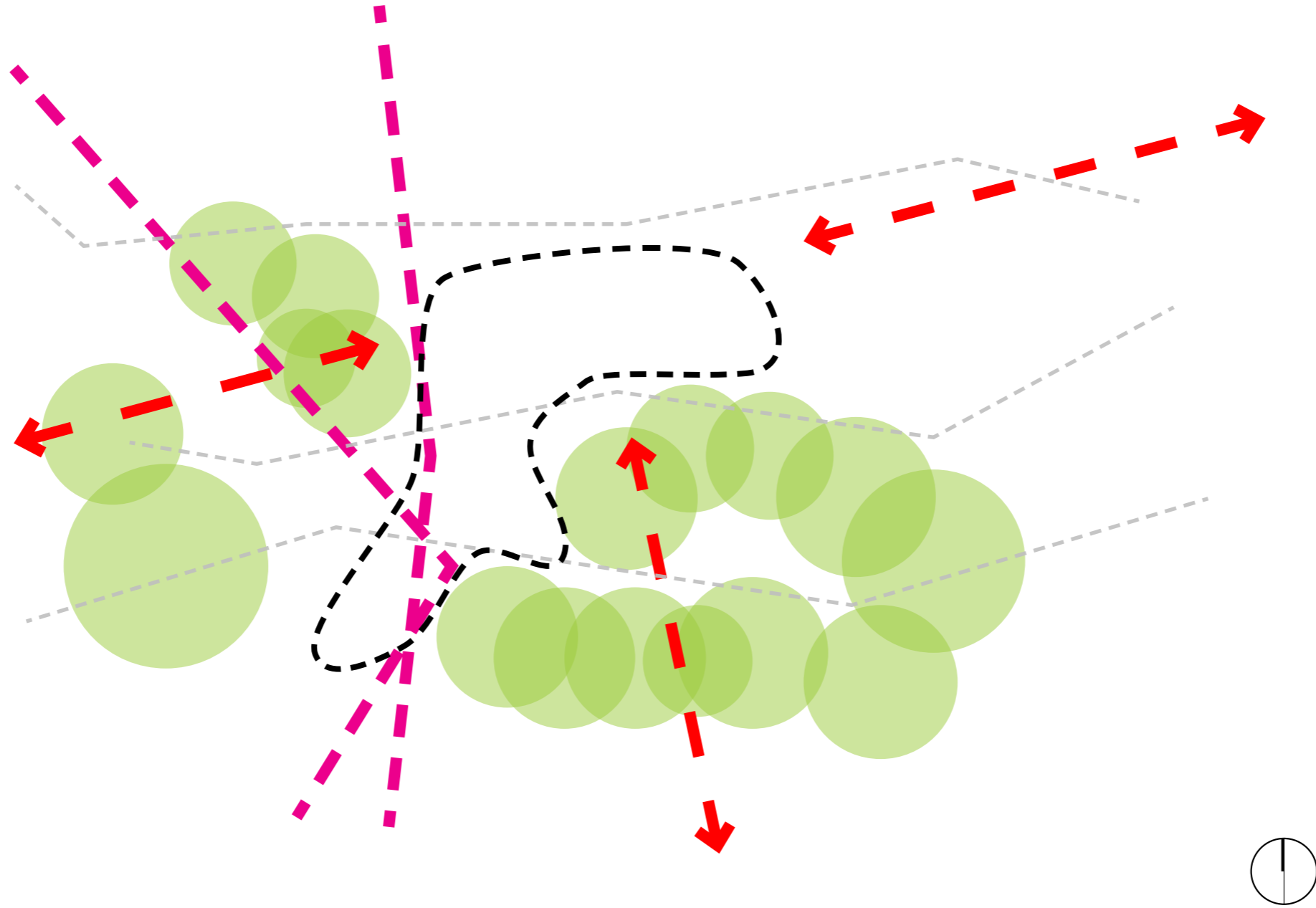
DESIGN
VISION

DESIGN VISION |

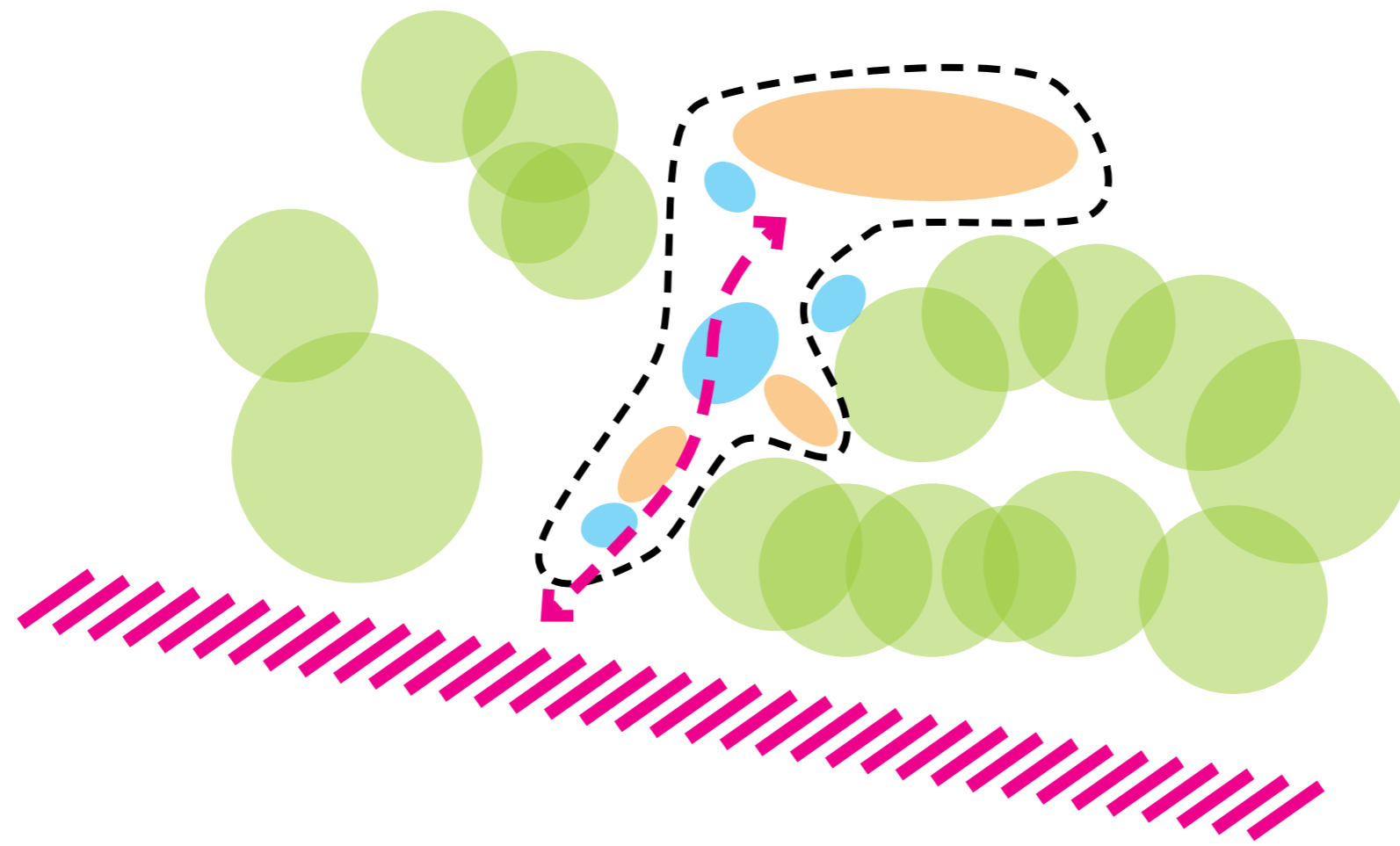
- **A UNIQUE MIXED USE FACILITY FOR THE WHOLE COMMUNITY**
- **ENCOURAGE PEOPLE INTO THE SPACE**
- **UTILISE THE SURROUNDING SITE + LANDSCAPE ENVIRONMENT**
- **CELEBRATE LOCAL YOUTH COMMUNITY**
- **ENHANCE SOCIAL INTERACTIONS + IMPROVE UPON CURRENT PARK REPUTATION**

CONCEPTUAL
PROGRESSION

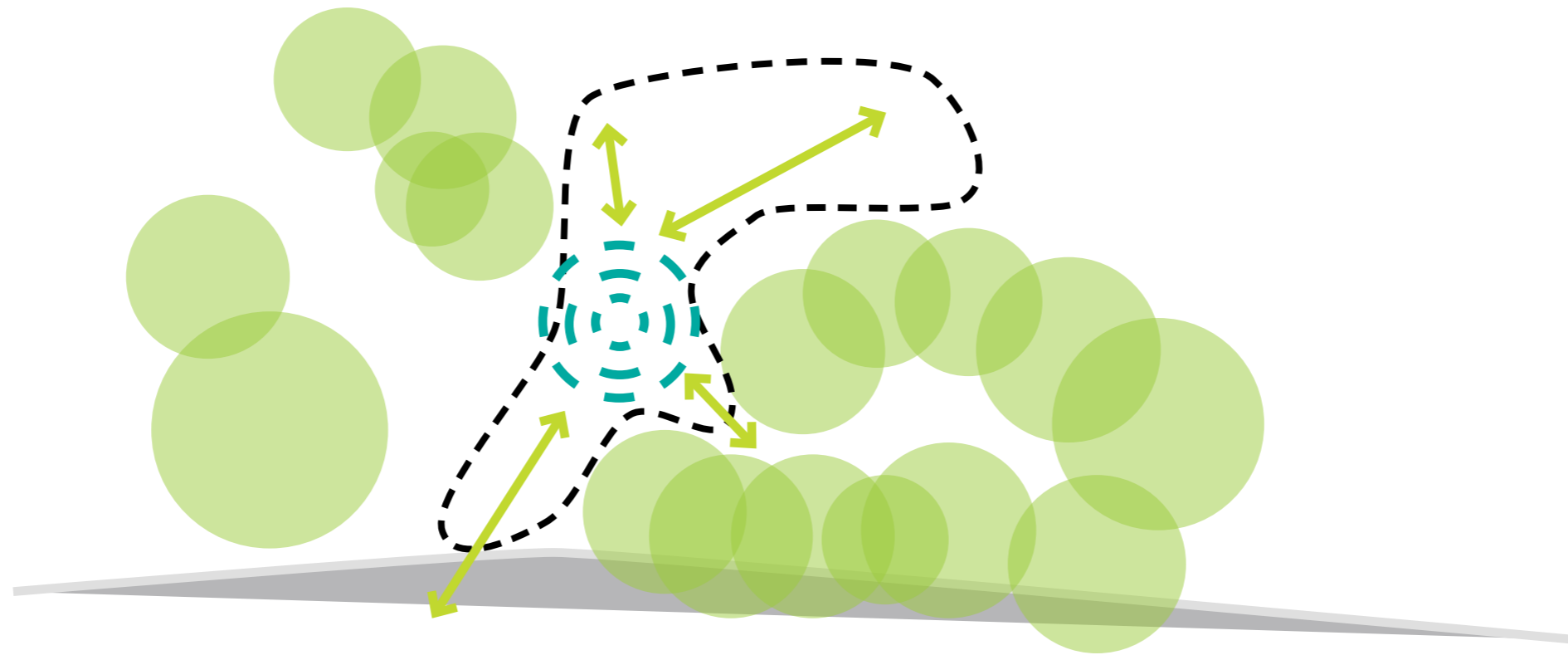
1. SITE CONSTRAINTS



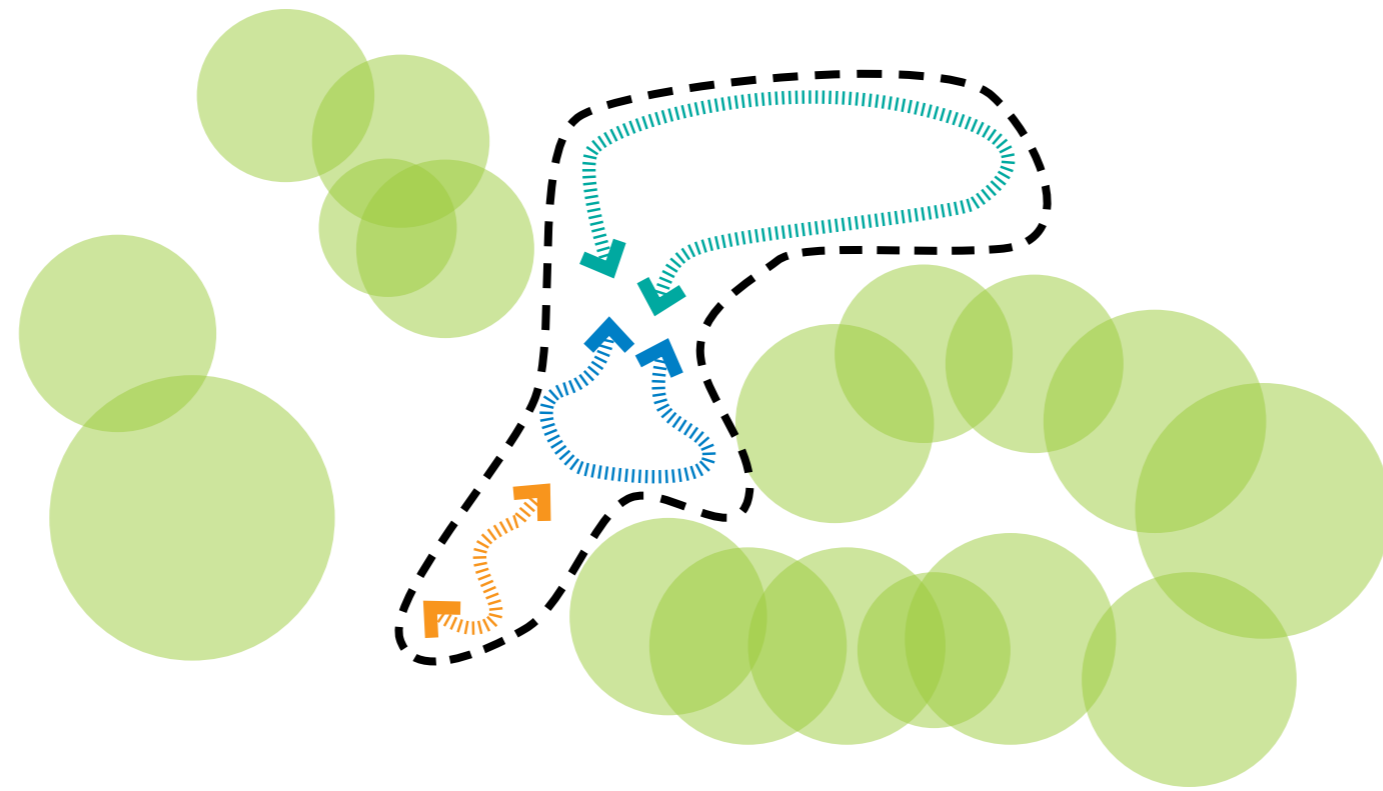
2. BRINGING PEOPLE INTO THE SPACE



3. CENTRALIZED 'MEETING PLACE'



4. COMBINE + COMPLEMENT



LEGEND

SKATE + PUMP WORKS

- 1 750H 'China' Bank
- 2 Hubba Slider
- 3 Flat Bar
- 4 Slappy Kerb Kicker
- 5 750H Transition Hip
- 6 Kerb Manny Pad
- 7 900H Roll in Hips
- 8 600H Volcano with Kerbs
- 9 900H Curved Quarter Pipe
- 10 Taco Extension
- 11 Down and Out Rail
- 12 Single Roller
- 13 Double Roller
- 14 900H Berm

LANDSCAPE WORKS

- 1 Central Seating area
- 2 Drinks fountain
- 3 Bins
- 4 Primary Footpath
- 5 Line Marking
- 6 Play Space with Soft Fall
- 7 Informal Seating Pod



3D OVERVIEW | SKATE + PUMP + PATH + PLAY



3D OVERVIEW | SKATE



3D OVERVIEW | SKATE + PUMP + PATH + PLAY



3D OVERVIEW | PUMP



THEMING

SKATE FEATURE PRECEDENTS

1. Centralised Curbed Garden Bed
2. Kicker to Rock Gap
3. Painted Pump Rollers
4. Play Equipment
5. Timber Topped Seats



ANY QUESTIONS ???

QUESTIONNAIRES

DESIGN WORKSHOP

An aerial photograph of a modern playground. In the upper left, there is a skate park with various ramps and bowls, where several people are gathered. In the center and lower right, there is a large wooden play structure with a green slide, a climbing wall, and a platform. A child is sliding down the green slide. To the right of the play structure, there is a small area with a tree stump and a child standing nearby. The playground is surrounded by green grass and trees. The text "WORKSHOP SUMMARY" is overlaid in the center of the image.

WORKSHOP SUMMARY

KEEP UP TO DATE:



FACEBOOK: CONVIC



INSTAGRAM: @CONVICSKATEPARKS



www.yourvoiceourcoast.com/KORA

CONVIC