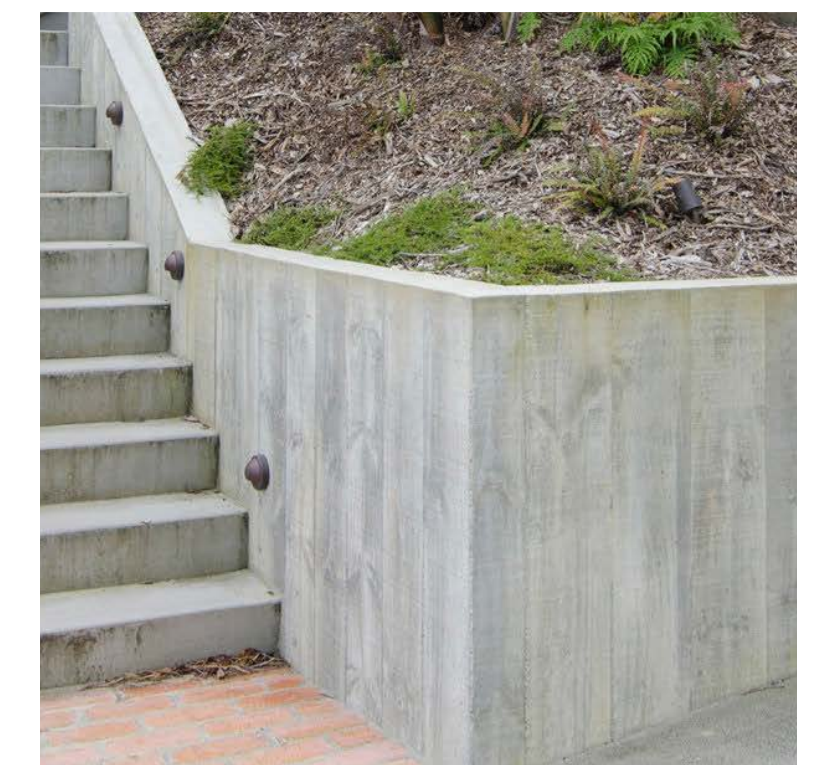


LEGEND

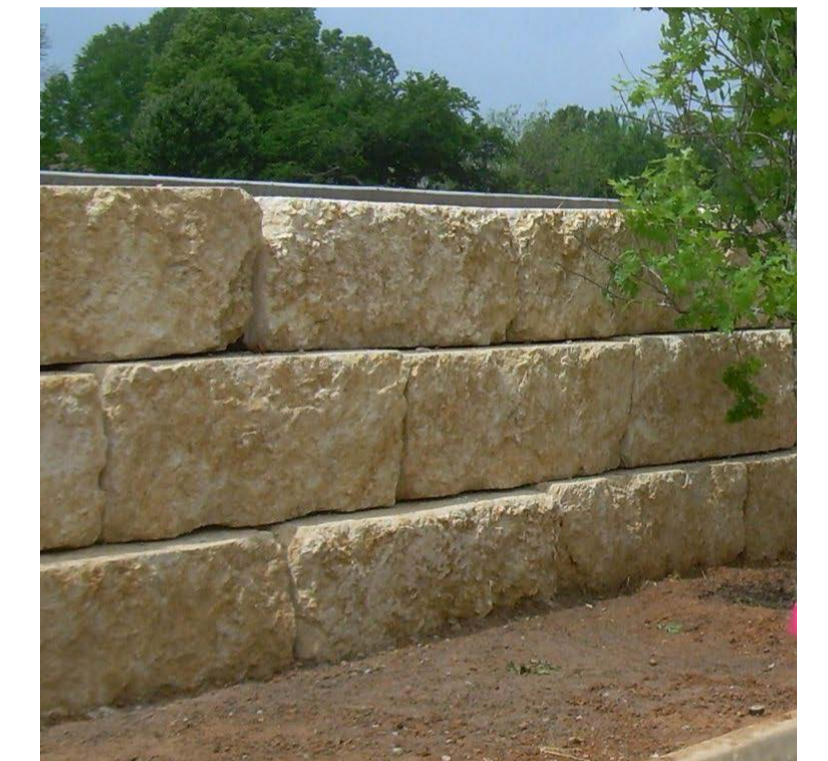
- Elevated Fibre Composite Walkway
- In-situ Coloured Concrete Walkway
- Existing Fibre Composite Platform
- Existing Coloured Concrete Walkway
- Sandstone Log Retaining Walls
- In-situ Concrete Retaining Walls
- Custom Handrail/Balustrade
- Solar Lighting and CCTV
- Lot Boundary

KEY DESIGN ELEMENTS

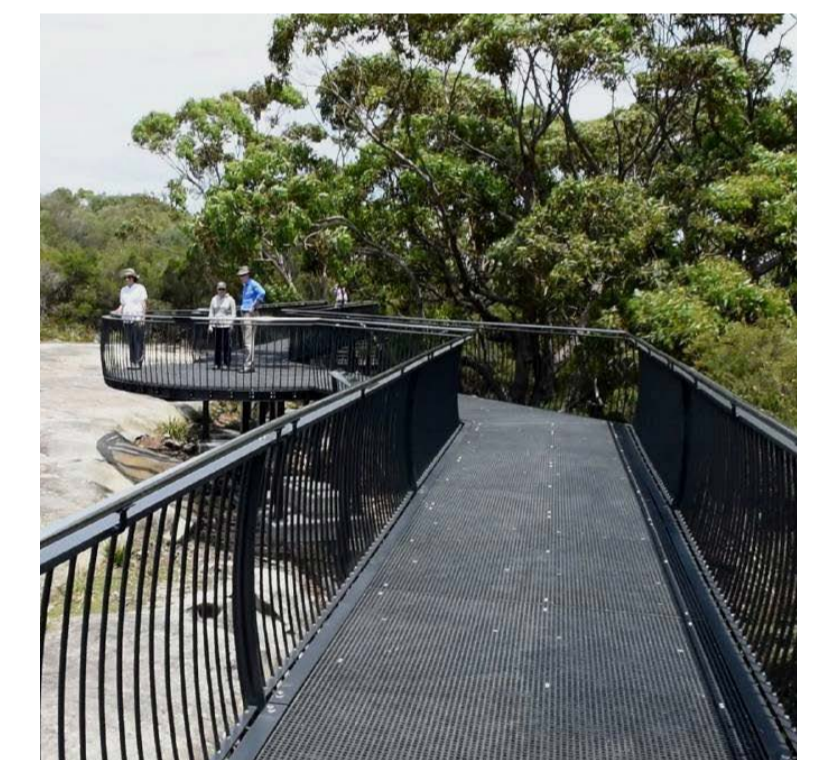
1. 2.0M WIDE ACCESSIBLE PATH.
2. UPGRADE OF THE EXISTING CAR PARK.
3. (NOT INCLUDED IN THIS OPTION)
4. UPGRADE CAPTAIN COOK LOOKOUT PLATFORM SAFETY BARRIER.
5. EXISTING CONCRETE PATH.
6. EXISTING COMPOSITE DECK VIEWING PLATFORM.
7. SANDSTONE LOG RETAINING WALL.
8. CONCRETE RETAINING WALLS (0.6M TO 1.5M HIGH)



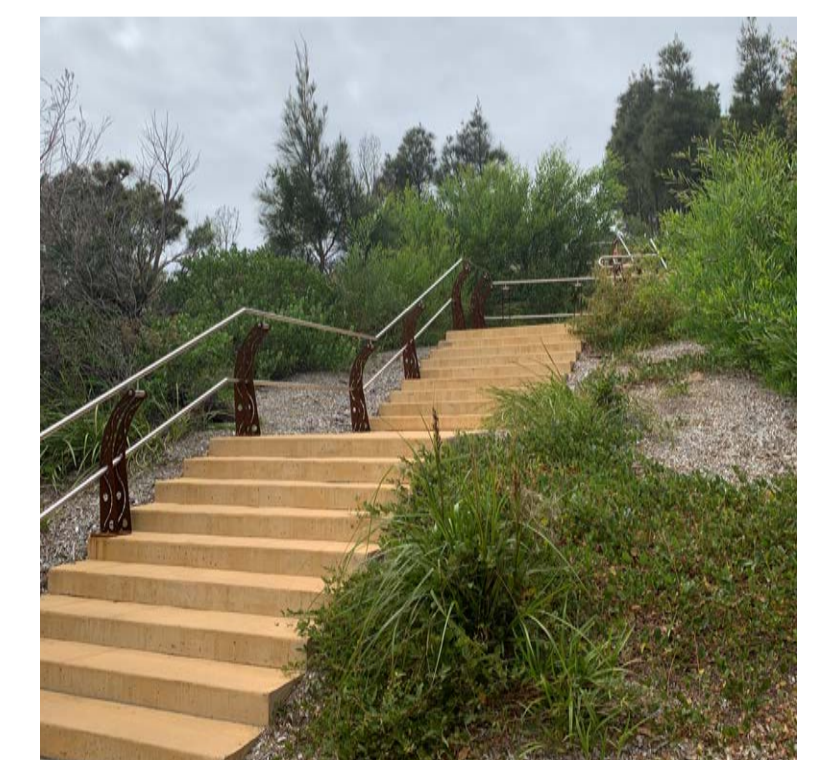
INSITU CONCRETE RETAINING WALL



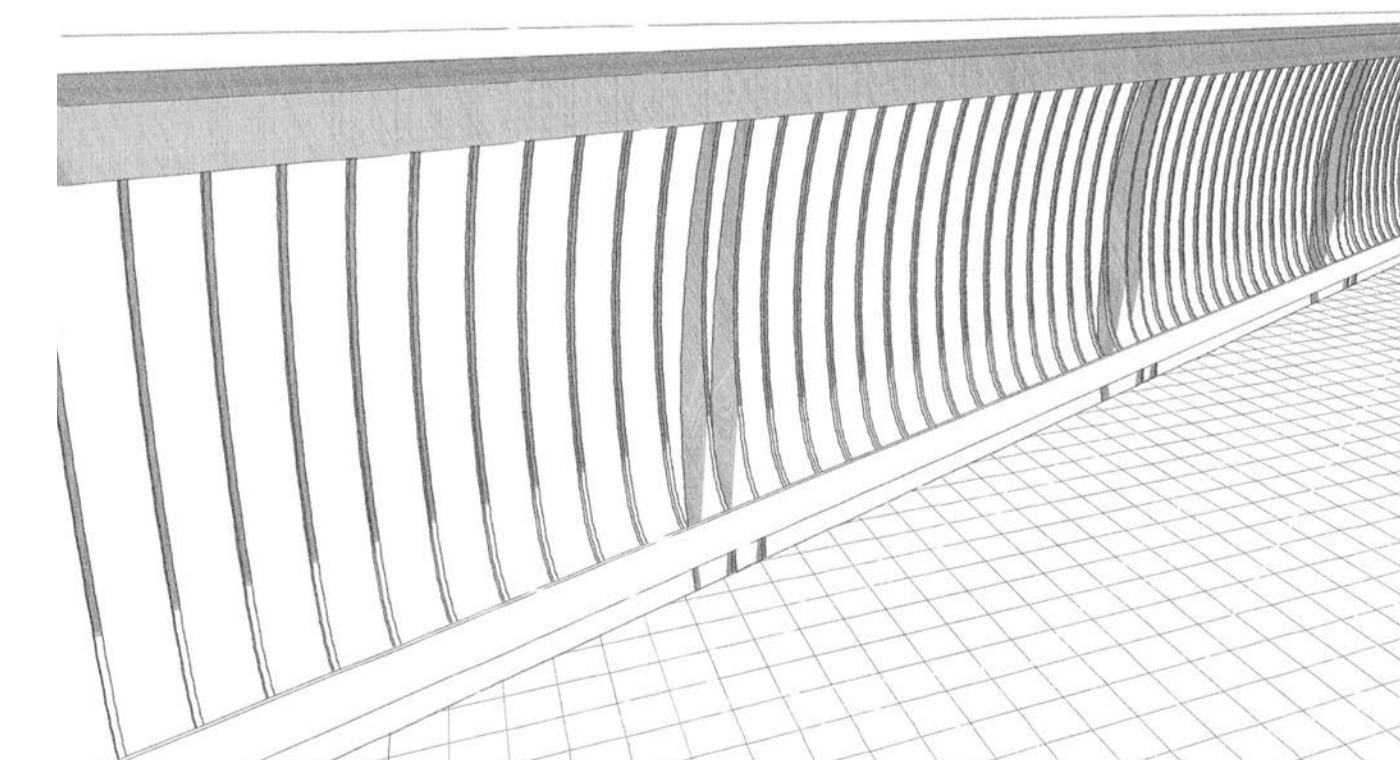
SANDSTONE LOG RETAINING WALL



ELEVATED FIBRE COMPOSITE WALKWAY



COLOURED CONCRETE STAIRS AND WALKWAY



CAPTAIN COOK LOOKOUT SAFETY BARRIER

Green Light Design Group
 ABN 15 613 450 034
 Address: 3 Lemon Tree Street Wyoming NSW 2250
 P +0402 230 148
 E derek@greenlightdesigngroup.com.au
 W www.greenlightdesigngroup.com.au

ENGINEER:

RGH CONSULTING GROUP
 Multi-discipline Engineering

REVISION	DESCRIPTION	DATE
P3	FOR REVISED COSTING	04/06/2020
P2	FOR COSTING	08/04/2020
P1	FOR GS INCEPTION MEETING	10/03/2020



PROJECT NAME:
Captain Cook Lookout Concept Design
 CLIENT:
 Central Coast Council

SITE:
 Del Monte Place Copacabana NSW 2251
 DRAWING TITLE:
LANDSCAPE CONCEPT PLAN C(ii)

REVISION NO. P3	DRAWN BY: DH	CHECKED BY: DH
DRAWING NO. LCP01	SCALE: 1:250@A1, 1:500@A3	PROJECT NO. 19.19
	Plot Date: 8/6/20	