

Climate Action Factsheet

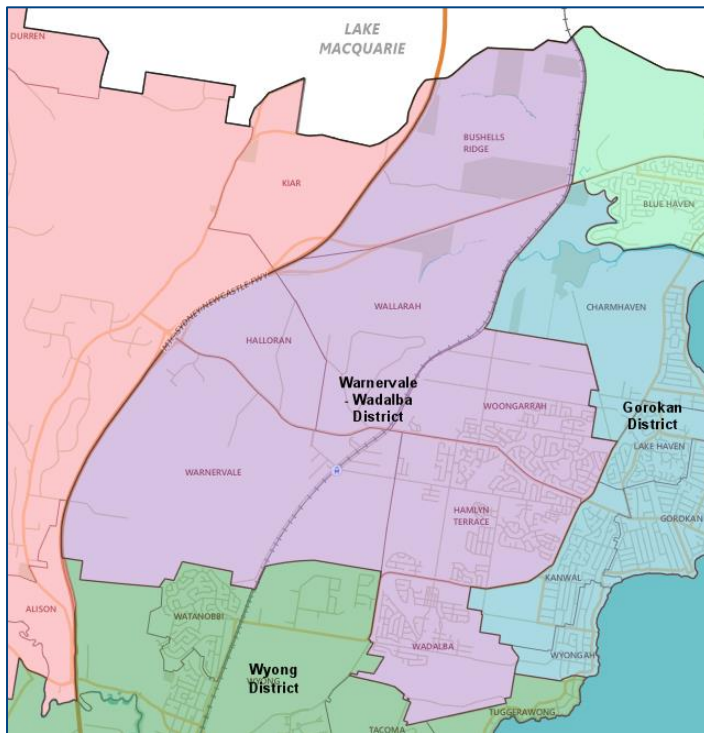
Warnervale – Wadalba Planning Area

#CentralCoastCAP



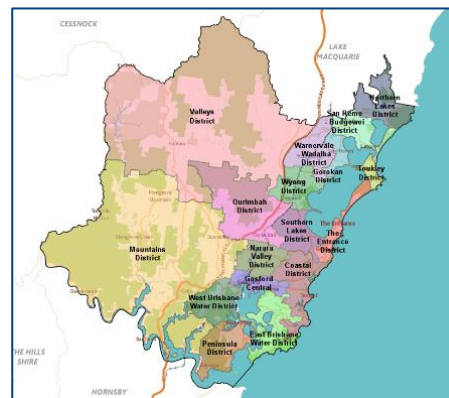
Where are we?

Warnervale - Wadalba planning area is bounded by Bushells Ridge Road and Gosford Road in the north, the railway line, Mona Road, Arizona Road, the suburb of Charmhaven, Mataram Road, the Pacific Highway and the locality of Kanwal in the east, the locality of Tuggerawong, Jensen Road, the Pacific Highway and the suburbs of Wyong and Watanobbi in the south, and the Pacific Motorway in the west.



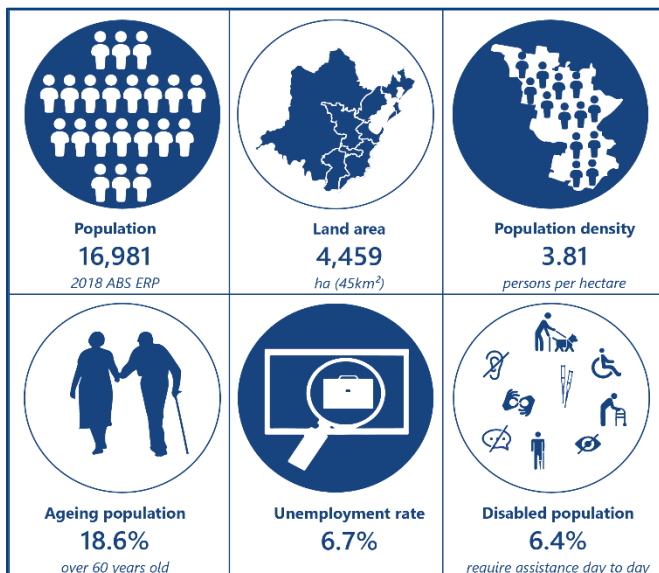
Suburbs

Warnervale - Wadalba planning area encompasses the suburbs and localities of Bushells Ridge, Halloran, Hamlyn Terrace, Wadalba, Wallarah, Warnervale and Woongarah.

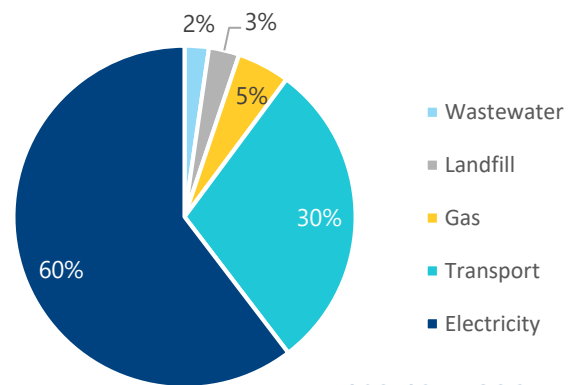


Who are we?

When considering how we plan for Climate Change, we must ensure all walks of life are considered. Some of these considerations are:



Warnervale - Wadalba Emissions Profile 2016/2017



103,124 tCO₂-e
3% of the Central Coast region's total emissions

Climate Action Factsheet

Warnervale – Wadalba Planning Area

#CentralCoastCAP



Climate Impacts in the Warnervale - Wadalba Planning Area

The following impacts have been identified for Warnervale - Wadalba and surrounding areas. Some of these impacts are already being experienced, with increases expected in the future:

	<p>Bush Fire Increased fire risk during spring and summer due to higher temperatures and less overall rainfall.</p>	
	<p>Rainfall and flooding Overall rainfall will decrease however more intense rainfall events will occur, resulting in more frequent flooding. Impacts include flash floods and catchment flooding, increased need for emergency response and recovery, damage to infrastructure, buildings and facilities, community anxiety and damage to natural assets.</p>	
	<p>Urban heat Increase in average and extreme temperatures with prolonged heatwaves. Impacts include human and livestock health, changes to bushfire behaviour and seasonality, increased building operational costs and asset deterioration.</p>	
	<p>Water availability Less overall rainfall. Impacts include fluctuations in water supply for drinking, irrigation and industrial use, as well as more pronounced flooding and drying cycles leading to drought.</p>	

Climate Action

Actioning climate impacts on the Central Coast has the potential to:

- Strengthen community resilience to climate hazards and natural disasters
- Help natural areas and ecosystems
- Reduce greenhouse gas emissions
- Lower Council's long-term infrastructure costs
- Improve community wellbeing
- Lead energy efficiency and energy security initiatives
- Develop new industries
- Identify climate action measures into policies, strategies and planning

