

Climate Action Factsheet

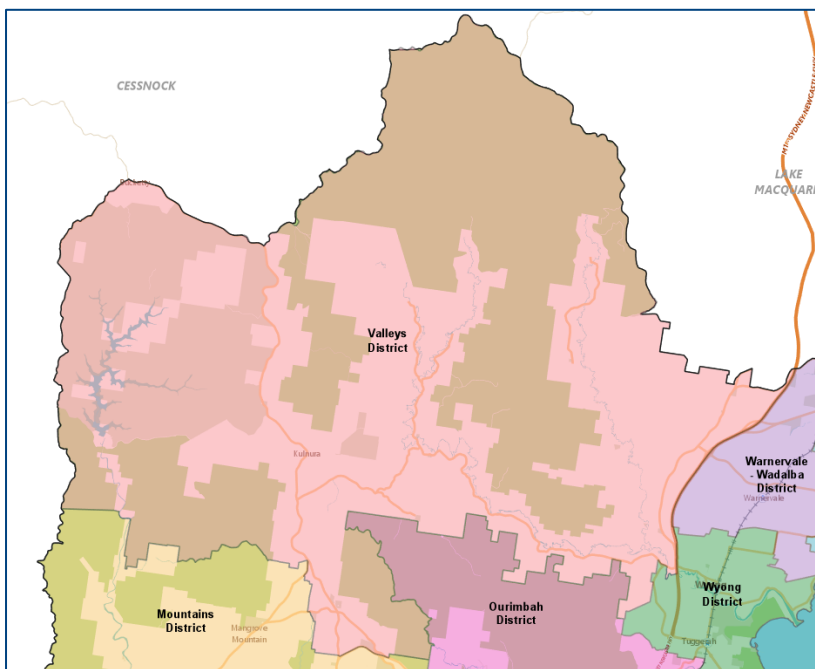
Valleys Planning Area

#CentralCoastCAP



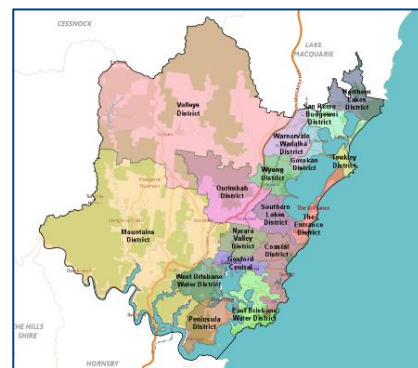
Where are we?

Valleys planning area is bounded by Cessnock City and Lake Macquarie City in the north, the Pacific Motorway in the east, the Wyong River, Yarramalong Road, the localities of Mardi and Ourimbah, Ourimbah Creek, the localities of Palm Grove and Somersby, Peats Ridge Road, The Springs Golf Club and the localities of Mangrove Mountain and Upper Mangrove in the south, and Hawkesbury City in the west.



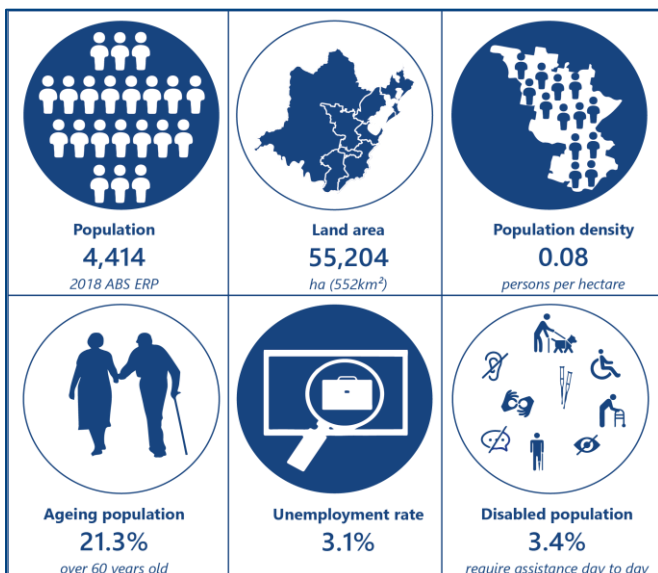
Suburbs

Alison, Cedar Brush Creek, Central Mangrove, Dooralong, Durren Durren, Jilliby, Kiar, Kulnura, Lemon Tree, Little Jilliby, Ravensdale, Wyong Creek and Yarramalong.

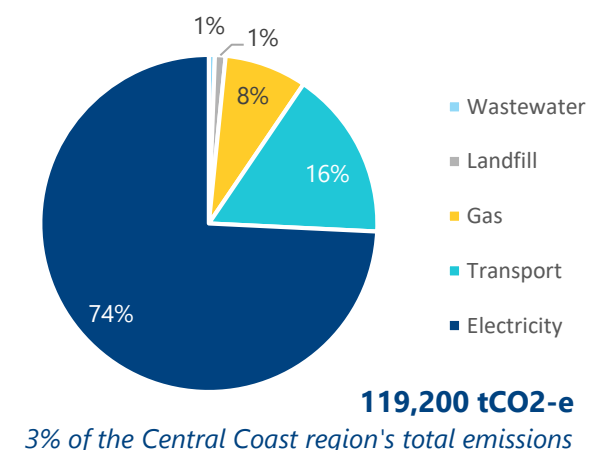


Who are we?

When considering how we plan for Climate Change, we must ensure all walks of life are considered. Some of these considerations are:



Valleys Emissions Profile 2016/2017



Climate Action Factsheet

Valleys Planning Area


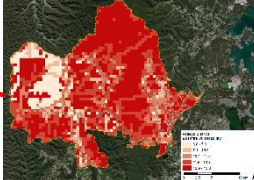

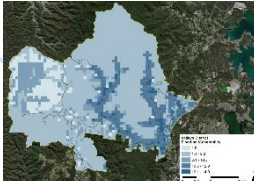
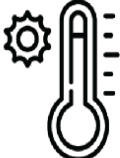
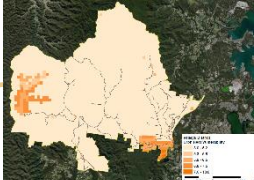

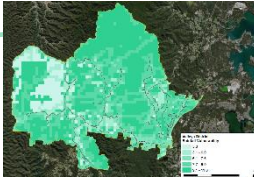
#CentralCoastCAP

Central
Coast
Council

Climate Impacts in the Valleys Planning Area

The following impacts have been identified for the Valleys and surrounding areas.

Some of these impacts are already being experienced, with increases expected in the future:

	<p>Bush Fire Increased fire risk during spring and summer due to higher temperatures and less overall rainfall.</p>	
	<p>Rainfall and flooding Overall rainfall will decrease however more intense rainfall events will occur, resulting in more frequent flooding. Impacts include flash floods and catchment flooding, increased need for emergency response and recovery, damage to infrastructure, buildings and facilities, community anxiety and damage to natural assets.</p>	
	<p>Urban heat Increase in average and extreme temperatures with prolonged heatwaves. Impacts include human and livestock health, changes to bushfire behaviour and seasonality, increased building operational costs and asset deterioration.</p>	
	<p>Water availability Less overall rainfall. Impacts include fluctuations in water supply for drinking, irrigation and industrial use, as well as more pronounced flooding and drying cycles leading to drought.</p>	

Climate Action

Actioning climate impacts on the Central Coast has the potential to:

- Strengthen community resilience to climate hazards and natural disasters
- Help natural areas and ecosystems
- Reduce greenhouse gas emissions
- Lower Council's long-term infrastructure costs
- Improve community wellbeing
- Lead energy efficiency and energy security initiatives
- Develop new industries
- Identify climate action measures into policies, strategies and planning

