

# Climate Action Factsheet

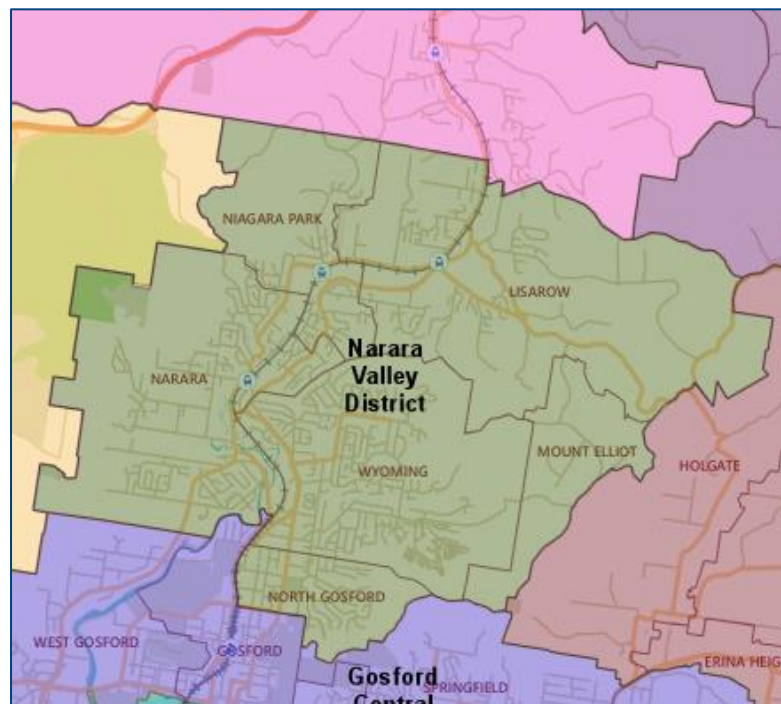
## Narara Valley Planning Area

#CentralCoastCAP

Central  
Coast  
Council

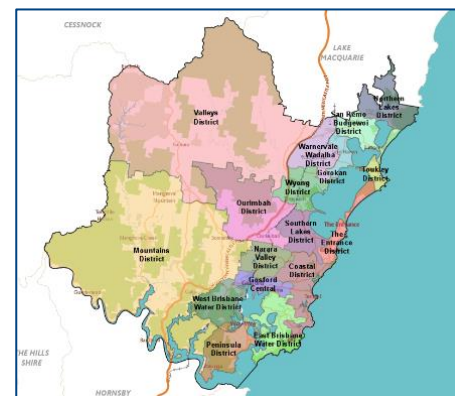
### Where are we?

Narara Valley planning area is bounded by the locality of Ourimbah, the railway line, Mannings Road, Cutrock Road and the locality of Tumbi Umbi in the north, The Ridgeway, the locality of Holgate and Toomeys Road in the east, the suburb of Springfield, Etna Street, the railway line, Narara Creek and the suburb of West Gosford in the south, and the locality of Somersby in the west.



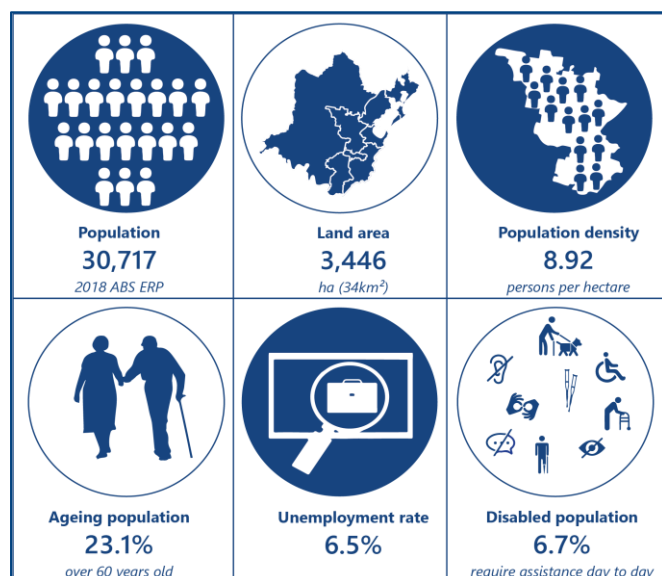
### Suburbs

Narara Valley planning area encompasses the suburbs and localities of Lisarow, Mount Elliot, Narara, Niagara Park, North Gosford and Wyoming.

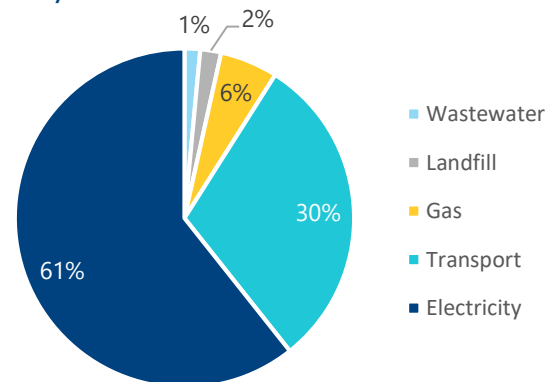


### Who are we?

When considering how we plan for Climate Change, we must ensure all walks of life are considered. Some of these considerations are:



### Narara Valley Emissions Profile 2016/2017



**324,459 tCO<sub>2</sub>-e**

9% of the Central Coast region's total emissions

# Climate Action Factsheet

## Narara Valley Planning Area

#CentralCoastCAP



### Climate Impacts in the Narara Valley Planning Area

The following impacts have been identified for the Narara Valley and surrounding areas. Some of these impacts are already being experienced, with increases expected in the future:

	<p><b>Bush Fire</b> Increased fire risk during spring and summer due to higher temperatures and less overall rainfall.</p>	
	<p><b>Rainfall and flooding</b> Overall rainfall will decrease however more intense rainfall events will occur, resulting in more frequent flooding. Impacts include flash floods and catchment flooding, increased need for emergency response and recovery, damage to infrastructure, buildings and facilities, community anxiety and damage to natural assets.</p>	
	<p><b>Urban heat</b> Increase in average and extreme temperatures with prolonged heatwaves. Impacts include human and livestock health, changes to bushfire behaviour and seasonality, increased building operational costs and asset deterioration.</p>	
	<p><b>Water availability</b> Less overall rainfall. Impacts include fluctuations in water supply for drinking, irrigation and industrial use, as well as more pronounced flooding and drying cycles leading to drought.</p>	

### Climate Action

- Actioning climate impacts on the Central Coast has the potential to:
- Strengthen community resilience to climate hazards and natural disasters
  - Help natural areas and ecosystems
  - Reduce greenhouse gas emissions
  - Lower Council’s long-term infrastructure costs
  - Improve community wellbeing
  - Lead energy efficiency and energy security initiatives
  - Develop new industries
  - Identify climate action measures into policies, strategies and planning

