

# Climate Action Factsheet

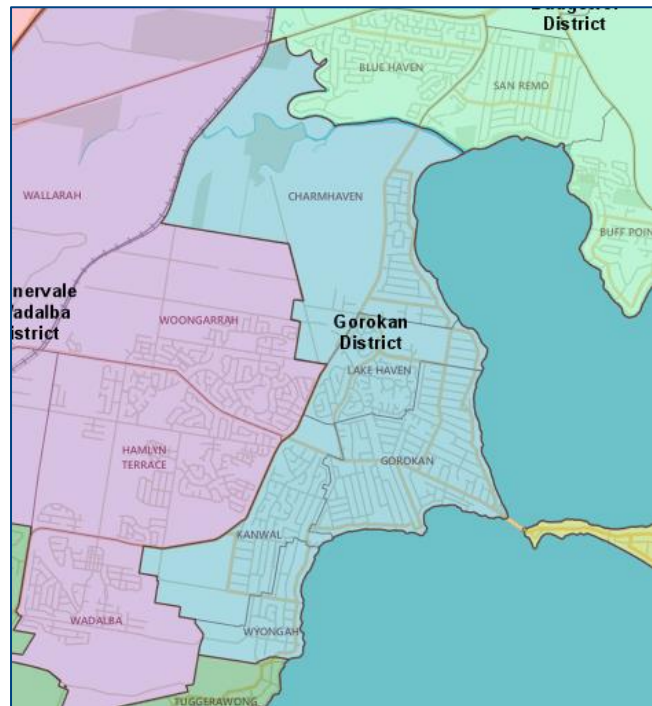
## Gorokan Planning Area

#CentralCoastCAP



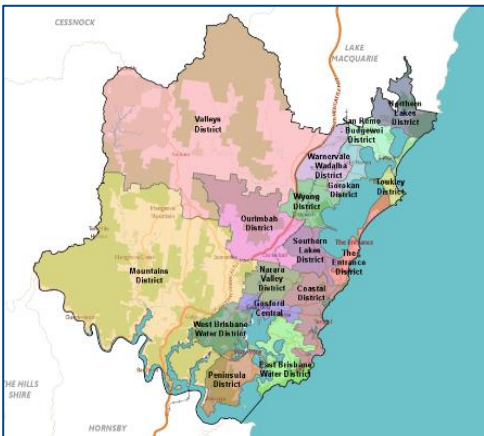
### Where are we?

Gorokan planning area is bounded by Doyalson Link Road, Spring Creek and Wallarah Creek in the north, Budgewoi Lake in the east, Tuggerah Lake, Saturday Street, Cadonia Road and the locality of Tuggerawong in the south, and the locality of Wadalba, the Pacific Highway, Mataram Road, the suburb of Woongarra, Arizona Road, Mona Road and the railway line in the west.



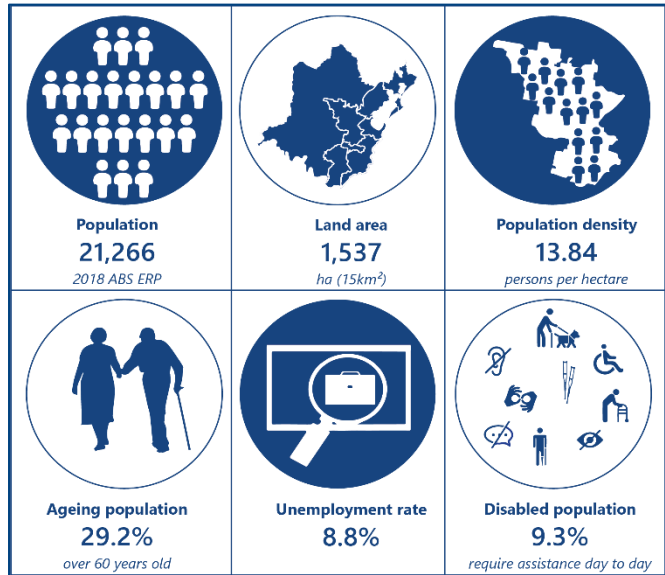
### Suburbs

Gorokan planning area encompasses the suburbs of Charmhaven, Gorokan, Kanwal, Lake Haven and Wyongah.

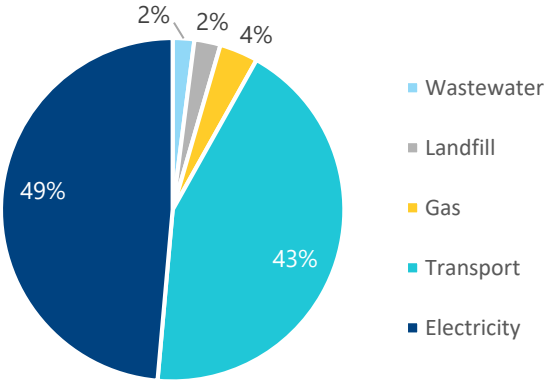


### Who are we?

When considering how we plan for Climate Change, we must ensure all walks of life are considered. Some of these considerations are:



### Gorokan Emissions Profile 2016/2017



**164,953 tCO<sub>2</sub>-e**  
4% of the Central Coast region's total emissions

# Climate Action Factsheet

## Gorokan Planning Area

#CentralCoastCAP



### Climate Impacts in the Gorokan Planning Area

The following impacts have been identified for Gorokan and surrounding areas. Some of these impacts are already being experienced, with increases expected in the future:

	<p><b>Bush Fire</b> Increased fire risk during spring and summer due to higher temperatures and less overall rainfall.</p>	
	<p><b>Rainfall and flooding</b> Overall rainfall will decrease however more intense rainfall events will occur, resulting in more frequent flooding. Impacts include flash floods and catchment flooding, increased need for emergency response and recovery, damage to infrastructure, buildings and facilities, community anxiety and damage to natural assets.</p>	
	<p><b>Sea Level Rise</b> A rise in sea levels affecting low-lying coastal areas due to added water from melting ice sheets/glaciers and the expansion of sea water as it warms. Impacts include coastal recession and erosion, asset damage, loss of coastal and estuarine ecosystems.</p>	
	<p><b>Urban heat</b> Increase in average and extreme temperatures with prolonged heatwaves. Impacts include human and livestock health, changes to bushfire behaviour and seasonality, increased building operational costs and asset deterioration.</p>	
	<p><b>Water availability</b> Less overall rainfall. Impacts include fluctuations in water supply for drinking, irrigation and industrial use, as well as more pronounced flooding and drying cycles leading to drought.</p>	

### Climate Action

- Actioning climate impacts on the Central Coast has the potential to:
- Strengthen community resilience to climate hazards and natural disasters
  - Help natural areas and ecosystems
  - Reduce greenhouse gas emissions
  - Lower Council's long-term infrastructure costs
  - Improve community wellbeing
  - Lead energy efficiency and energy security initiatives
  - Develop new industries
  - Identify climate action measures into policies, strategies and planning

