



Central
Coast
Council

LOCAL STRATEGIC PLANNING STATEMENT

The Framework For a Growing Central Coast Region



Draft for Public Exhibition
April 2020

PART A **FORWARD**





STATEMENT OF INTENT

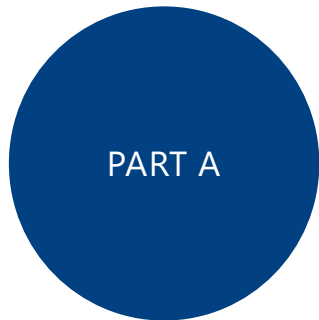
THE CENTRAL
COAST LOCAL
STRATEGIC PLANNING
STATEMENT: Provides
a land use vision
that will guide the
future growth and
development across
the Region to 2036
and beyond.

Central Coast Council has recognised that a well-considered and consistent approach to planning is required to ensure that future forecast population growth is provided for and managed in a sustainable manner.

The Central Coast is a great place to live, with a passionate community that wants to see their way of life enhanced, without sacrificing their valuable natural assets or relaxed lifestyle.

This is our long term Vision for growing the Central Coast Region in a manner that enhances its character, preserves its natural attributes and improves our quality of life.

CONTENTS



- 01 Statement of Intent
- 02 Contents
- 05 Acknowledgements
- 06 CEO's message
- 08 A New Vision for the Region
- 10 Strategic Alignment and Purpose
- 12 Our Future as a Regional City
- 14 Spatial Plan
- 16 Central Coast Region - Planning for Growth
- 18 A Strategic Vision



- 22 Central Coast Profile
- 24 Key Drivers of Change
- 26 Our Engagement So Far
- 28 Region's 10 year Growth Trend



- 33 One Direction for Growth
- 35 Guiding Planning Pillars
- 36 One Central Coast CSP + Key Focus Areas
- 38 4 Growth Strategies



PART D
DIRECTION
FOR GROWTH

- 52 Centres and Corridors
- 58 Our Key Centres
- 76 Housing
- 84 Economics
- 92 Environment
- 100 Agriculture and Rural Land
- 108 Open Space
- 114 Community and Culture
- 120 Heritage
- 128 Transport
- 136 Water and Sewer
- 142 Waste



PART E
THE WAY
FORWARD

- 150 A Comprehensive Local Environmental Plan
- 151 Have Your Say
- 152 Central Coast Council Wards & Planning Areas
- 154 LSPS Priorities and Actions

ACKNOWLEDGEMENTS



An aerial photograph of a coastal town, likely in the Central Coast region of New South Wales, Australia. The town is built on a hillside overlooking a bay. A large, semi-transparent circular graphic is overlaid on the right side of the image, containing text. The background shows a mix of greenery, residential buildings, and a blue bay with a distant headland under a clear sky. A vertical line of small blue circles runs down the right edge of the page.

Indigenous Acknowledgement

We Acknowledge the Traditional Custodians and First Peoples of this Land and pay our respects to Elders, both past and present. The Local Strategic Planning Statement is actively committed to outcomes and actions that include and better continue local indigenous stories and culture in our vision for the future.

Acknowledgement of Council's Role

Central Coast Council has produced this document based on prior studies, strategic planning and community consultation undertaken as part of the 10 year Community Strategic Plan 'One Central Coast' (CSP). It aims to provide a consistent direction for future growth and a vision under which further strategic planning and project delivery can be based.

Council has a responsibility in facilitating, advocating and enabling the actions included in this vision document. Council will provide leadership but is not solely responsible for the delivery of this vision. It will work closely with all stakeholders and the community to inspire joint action and delivery.

Acknowledgement of the Central Coast Regional Plan 2036

The Local Strategic Planning Statement is based on population growth scenarios and strategic regional planning goals of the NSW Department of Planning and Environment's Central Coast Regional Plan 2036. Central Coast Council will continue to work closely with the Department and other State Government Agencies to ensure a consistent and collaborative approach to strategic planning for the Region.

CEO'S MESSAGE

add message

Gary Murphy
Chief Executive Officer
Central Coast Council



A NEW VISION FOR THE REGION



THE LOCAL STRATEGIC PLANNING STATEMENT

The Local Strategic Planning Statement is a framework for a Growing Central Coast Region and marks a new phase for the Central Coast. It sets a clear vision for the future and a proactive framework for delivering a growing and sustainable Region with a strong network of Centres and thriving and connected communities.

The Local Strategic Planning Statement (LSPS) is our guide to how the Central Coast will respond to future population growth challenges in a manner that benefits our existing residents.

It responds to the goals and directions of the NSW State Government's *Central Coast Regional Plan 2036*, and the Central Coast Council Community Strategic Plan, presenting the direction for future growth and development for the Central Coast and a toolbox of future actions that will support and deliver the Community Vision.

Through the direction of the LSPS, we will deliver the housing diversity, transport improvements, infrastructure upgrades and economic and social vitality desired by our community, without compromising the identity, quality and nature of Central Coast living.

The LSPS provides the direction for growth that will inform future strategic planning instruments, plans and policies and sets in place required actions to be included in future Central Coast Council Delivery Programs and Operational Plans.

The desired outcomes of the LSPS will enable Council to undertake meaningful discussions with industry, community and other government agencies as to how development, business, investment and infrastructure shall be planned, managed and delivered.

The LSPS informs Council's legal requirement under Part 3B of the *Environmental Planning and Assessment Act 1979* and together with the *Community Strategic Plan* will guide the long term social, environmental and economic aspirations of the community.

STRATEGIC ALIGNMENT



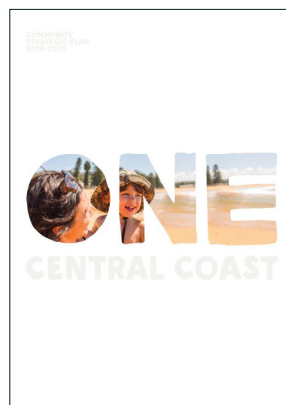
This Local Strategic Planning Statement addresses the core challenges and opportunities that have been provided by the NSW State Government Central Coast Regional Plan 2036, as well as incorporating all local priorities of the Central Coast Region.

STRATEGIC ALIGNMENT WITH STATE AND LOCAL PRIORITIES

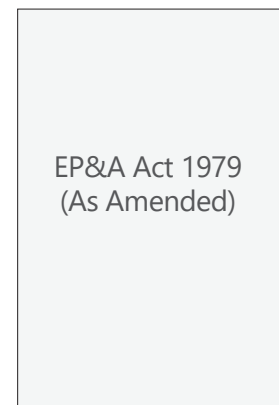
CENTRAL COAST
REGIONAL
PLAN 2036



COMMUNITY
STRATEGIC PLAN



LEGAL
OBLIGATION



LOCAL STRATEGIC
PLANNING STATEMENT

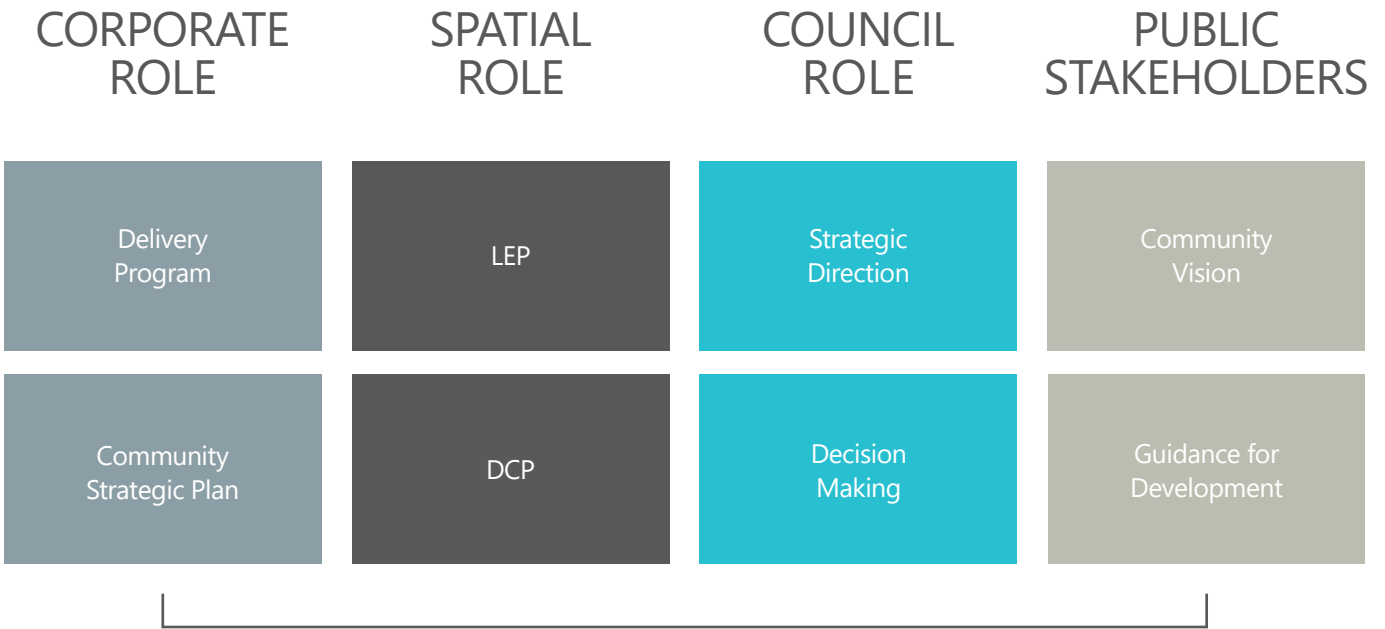
Framework For A Growing
Central Coast Region

STRATEGIC PURPOSE



The Local Strategic Planning Statement is the key reference document that works alongside the Community Strategic Plan to inform Central Coast Council's priorities for the Region in the Delivery Program.

LOCAL STRATEGIC PLANNING STATEMENT The Framework For A Growing Central Coast Region

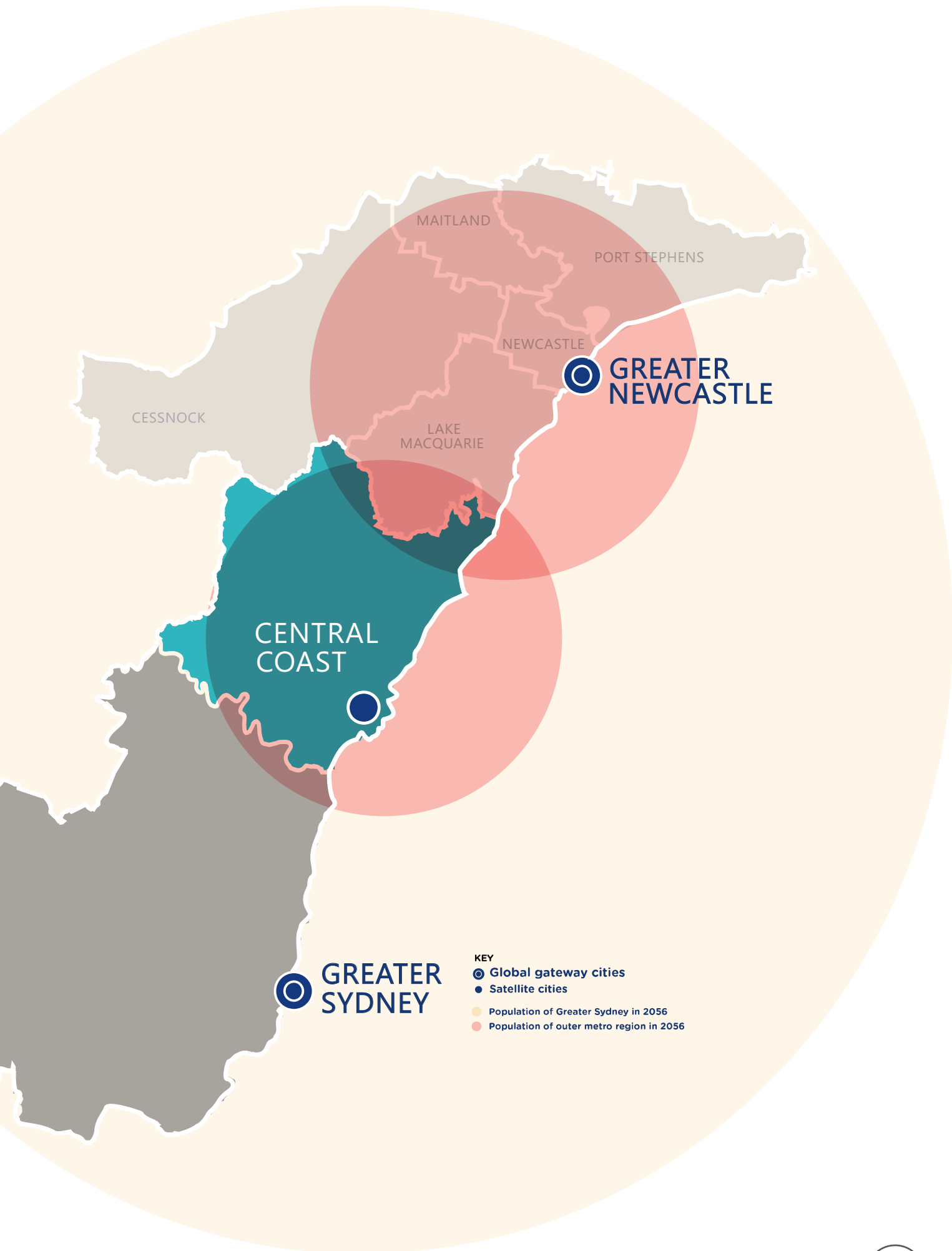


OUR FUTURE AS A REGIONAL CITY

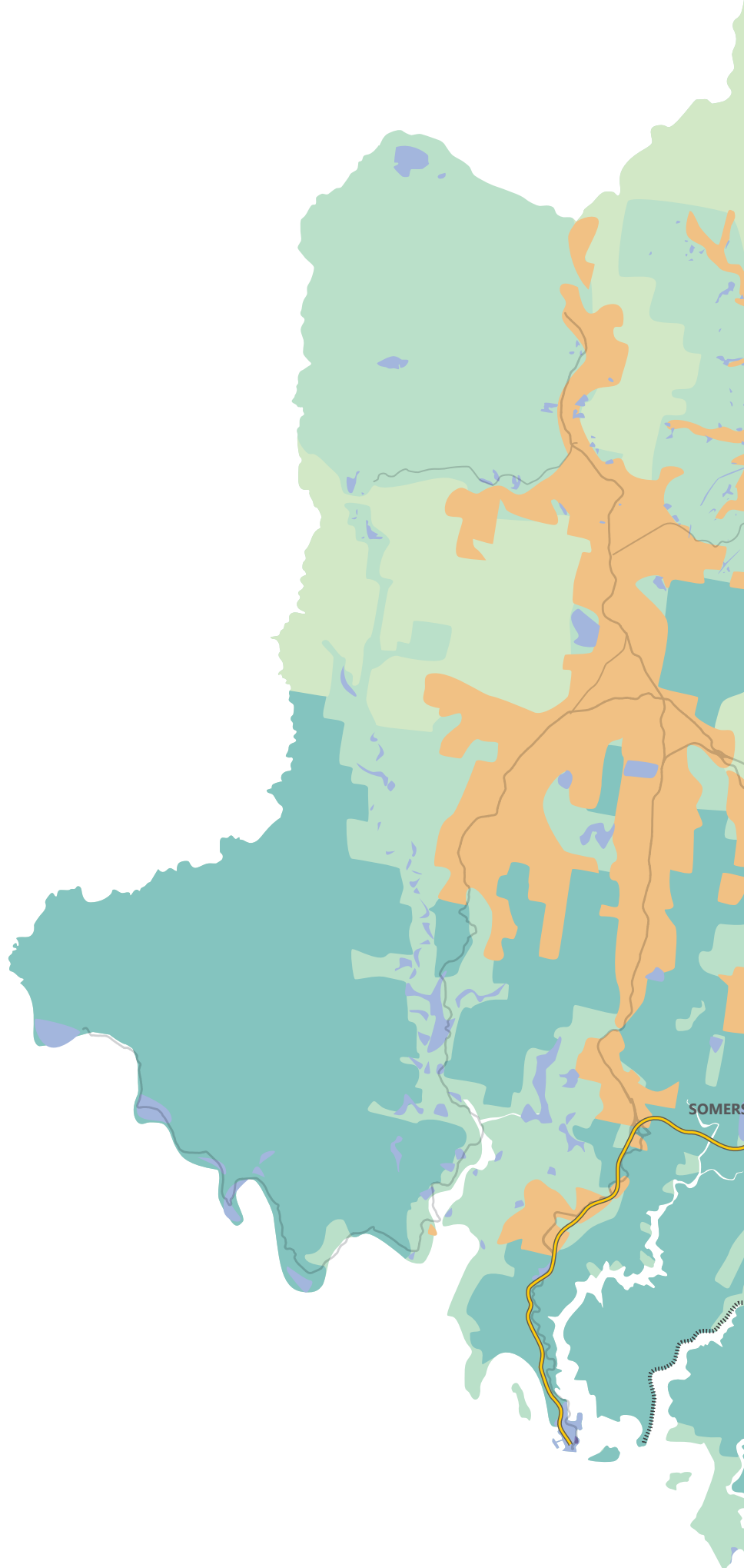
As New South Wales increases in population, regional cities across the state will provide a greater role in delivering services, transport and housing to the community. Gosford Regional City is located between the global gateway cities of Sydney and Newcastle.

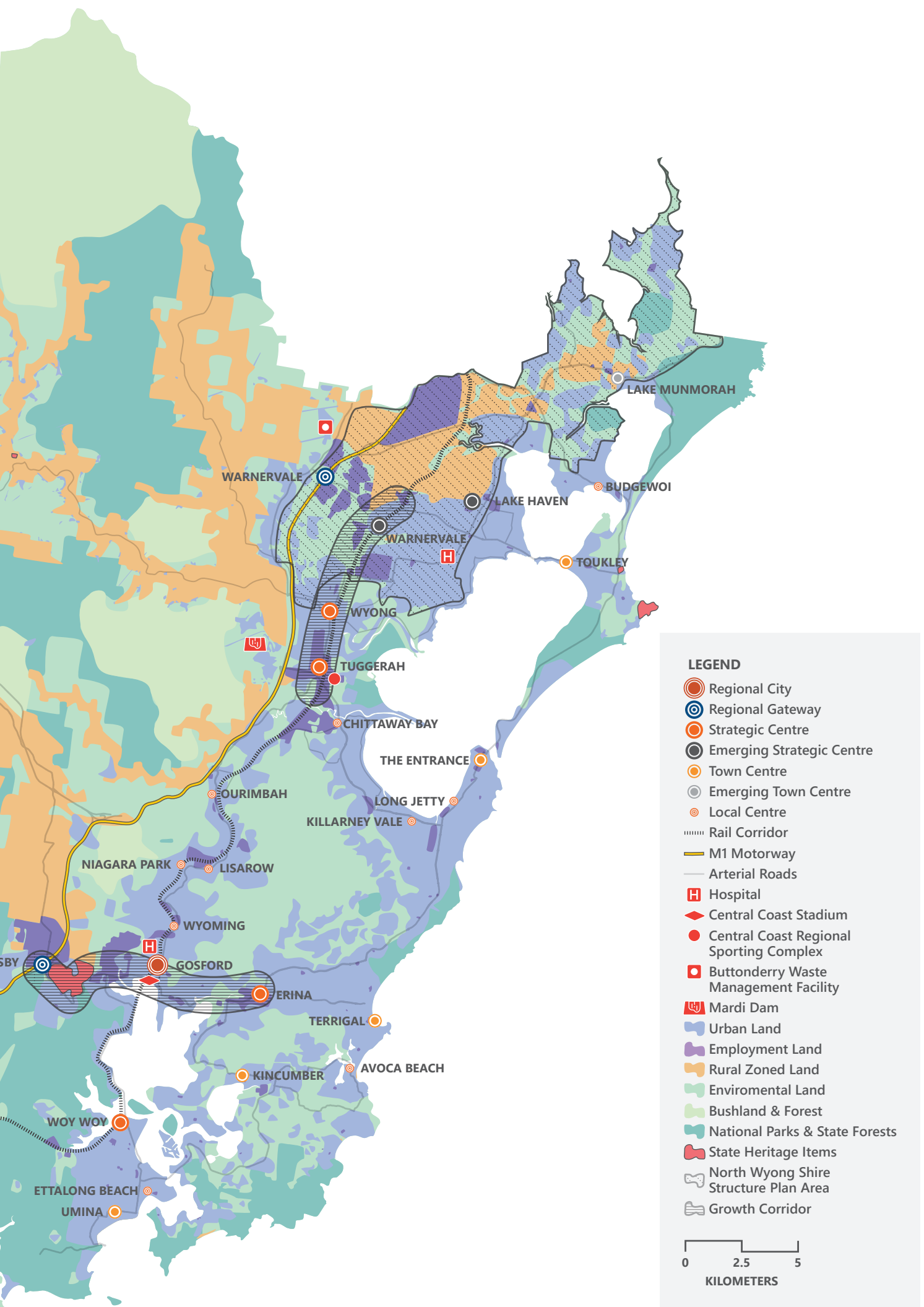
The NSW Government aims to maximise the potential for regional areas in anticipation of high population growth, particularly in regional areas along the coastline surrounding Greater Sydney.

As the centre of the state's fastest growing corridor, the Central Coast is strategically positioned to provide greater service provision for its growing population, and to provide a new direction for growth.



SPATIAL PLAN

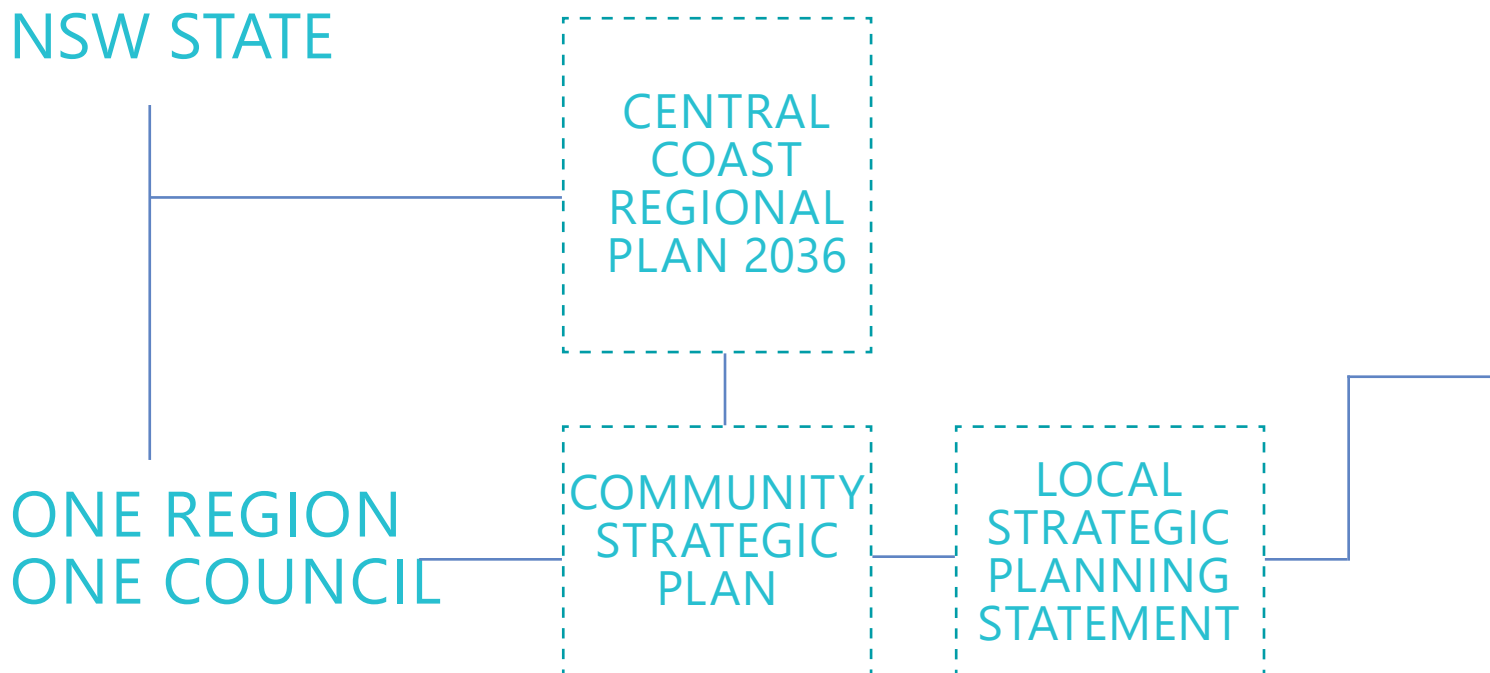




Source: Central Coast Council

CENTRAL COAST REGION PLANNING FOR GROWTH

NSW STATE

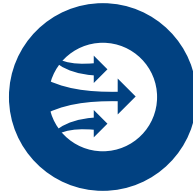


ONE REGION
ONE COUNCIL

IN 2016, Wyong Shire Council and Gosford City Council merged to become governed by one Local Government called Central Coast Council.

Our future planning will respect existing community visions and cultivate a new approach.





PLANNING STRATEGIES

PLANNING INSTRUMENTS

CENTRE MASTER PLANS

PLANS AND STRATEGIES

LEP

PLANNING TOOLS

LOCAL PLANS

DCP

A STRATEGIC VISION

Embarking on a vision for the growth of the Central Coast Region is a chance to engage with best-practice planning principles.

The Central Coast will become a resilient 21st century region that overcomes the constraints of its spatial form by reorienting neighbourhoods to their Centres, directing expected population growth so that it does not unfairly pressure or compromise the amenity of existing communities or environments.

The Central Coast will grow in a manner that ensures increased residential density is associated with increased accessibility to public transport options, amenities, services and employment, which can contribute in various ways to economic, social and environmental forms of resilience. New strategic planning directions set out within the Framework will enrich lifestyle choices through this notion of access.

Having connected and accessible Centres and Corridors that conduct a high capacity flow of people to local jobs, education and housing markets will be the catalyst for local productivity, human capital development, equity and social inclusion and housing diversity on the Central Coast.

Through a period of growth we will have taken opportunities to innovate and upgrade existing urban systems. Our built environment will be based on principles that minimise resource use, reduce waste and better respond to hazards. The natural quality of the Central Coast will be integrated in new built forms that support and complement existing patterns of living.

Through the Community Strategic Plan 'One Central Coast' and this Framework, we will shape the built environment to be more adaptable to changes that unfold and affect the region over time. Our community will have the opportunity to participate in the creation of locally-specific actions that provides unique and appropriate, place-specific outcomes.

The Central Coast of tomorrow will show leadership in place-making, environmental protection, sustainability, infrastructure and community resilience. Gosford City Centre will become the Capital of the Central Coast, providing regional-level facilities and a positive local identity. Our other Centres will thrive with more living and working opportunities, providing key services to surrounding communities. Importantly, our communities will be physically connected through appropriate infrastructure and socially connected through strong relationships and a sense of unity.



A NEW DIRECTION

Guiding growth and development to revitalise Centres, support an improved transport network and continue to protect the natural environment, providing lifestyle options inherent to the Coast.

THE CENTRAL COAST WILL BE A SMART, GREEN AND LIVEABLE REGION WITH A SHARED SENSE OF BELONGING AND RESPONSIBILITY



WALKABLE CENTRES

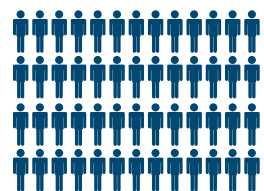
LOCAL EMPLOYMENT OPPORTUNITIES

GREATER PUBLIC TRANSPORT OPTIONS

GREEN SPACES

PLANNING FOR ALL AGES

A STRONG FRAMEWORK FOR FUTURE GROWTH



FUTURE