



Central Coast Council
DRAFT Playspace Strategy
2020



Playspaces are often the social core of the neighbourhood.

CSP Objective A4 - Belonging

Our Vision

The Central Coast Region has a network of high quality inclusive playspaces which contribute to active lifestyles, support social engagement, are creative, enjoyable, appropriately sited, equitably distributed and sustainably managed.

Importance Statement

The World Health Organisation cites the importance of providing safe environments for children to engage in play-based learning which create opportunities to develop life skills that help combat intolerance, gender discrimination, and peer violence.

Children's play patterns are changing, and research shows a decline in participation in organised sport which has led to more participation in alternative activities. Children today have fewer links to the natural world - described as the 'shrinking horizons of childhood' - and increased exposure to natural areas like our parks and playspaces provide better chances for our children to have healthy successful lives.

Community Strategic Plan

Council's Community Strategic Plan (CSP) - 'One - Central Coast', 2018-2028, was developed from extensive community consultation and has five key themes - Belonging, Smart, Green, Responsible, Liveable - which shape future activities, plans projects and services, including the planning and delivery of playspaces.

Our community have said they value playspaces and the CSP has specific objectives relating to this.

The CSP can be viewed and downloaded from Council's website, go to centralcoast.nsw.gov.au/council/forms-and-publications/community-strategic-plan

Playspaces create opportunities for connection and foster a sense of belonging
CSP Objective A2 - Belonging

Why a Strategy

This new strategy is the result of a review of the former Wyong Shire Council (fWSC) and former Gosford City Council (fGCC) strategies and provides strategic direction for the development, and sustainable management of playspaces across the region.

We have over 260 public playspaces in parks, reserves, holiday/caravan parks and community centres. A well designed strategy articulates a hierarchy of quality playspaces offering diverse opportunities as well as providing equitable distribution across the region.

Changes to legislation, community expectations, new trends, and the increasing urbanisation of the Central Coast will require the review of this strategy every five (5) years.

The Role of our Playspaces

Play is for everyone, and our playspaces are often the social core of our neighbourhoods and town centres. A community's social ties can depend on the informal social contact which occurs in neighbourhood common spaces such as our parks and reserves.

Playspaces are more than the equipment; they include a 'whole of park' experience and can offer multiple activities for all abilities. They provide meeting places and activities where communities gather, socialise, exercise, and get respite from daily duties. They provide opportunity for intergenerational co-operation, tolerance, social interaction and co-existence. This assists with counteracting age stereotypes, developing emotional and social skills and supporting social integration.

It is important to provide informal facilities such as playspaces for the pre-adolescent age group as this is commonly the time when many children, particularly girls, begin to drop out of organised physical activity and become less active.

Carefully planned, designed and sustainably managed playspaces, allow children to learn, discover, socialise and test their physical abilities through play. Children learn to manage risks in a controlled environment which aids the development of life skills



Scope

This strategy applies to playspaces in public parks and reserves across the LGA. It includes those playspaces that are co-located with other recreation facilities such as sports fields and may include associated facilities such as basketball hoops, 'learn-to-ride' or fitness equipment. It does not include childcare centres, holiday parks and community centres.

Strategy Objectives

The strategy objectives are to:

1. Set the direction for future planning and delivery of playspaces within the region
2. Establish the principles for the provision of quality facilities for the Central Coast
3. Outline the process for the sustainable management of playspaces

Where are the needs

The Central Coast is forecast to grow to a population of 414,615 by 2036 with the largest percentage age groups predicted to be the 5 to 9 years, and 40-44 years.

The Warnervale-Wadalba District is forecast for the greatest increase in persons 0-14 years and the Peninsula District seeing the largest population of over 65 years. This tells us we need to cater for both ends of the age spectrum with our facilities.

Currently 10.4% of the population requiring assistance are between 0-14. Eight suburbs record an above average population requiring assistance including Erina, Canton Beach, Toukley, Kanwal/ Wyongah; Charmhaven/Lake Haven, Woy Woy/Blackwall, North Gosford/Wyoming; Lake Munmorah/Chain Valley Bay

Playspace Distribution

New parks and facilities are guided by existing planning policies and strategies which have considered the current and future needs of the community including population density.

CCC has developed a hierarchy of playspace categories which serve the different residential catchments. The hierarchy reflects State Guidelines for local, district and regional open space networks and is as follows:

- Local playspace - within 400-800m walk
- District playspace -1-2 km radius of residential catchment or 1/Social Plan District
- Regional playspace- 5-10 km radius

This assists with providing equitable distribution and variety of playspaces across Social Planning Districts (SPD). Distribution is determined by the availability, size and quality of existing open space, demographic data and the category of playspace facility proposed. The majority of CCC playspaces are in local parks.





Providing Quality Playspaces

The following key principles direct the provision of playspaces.

- a. **Equitable distribution** - Provision of a network of quality playspaces that ensures supply and category of playspaces meet the needs of the area.
- b. **Co-location** with other facilities such as amenities, sporting facilities, parking to maximise capacity and efficiency of use.
- c. **Well-designed** - Design that considers the context and embraces a 'whole of park' approach so that playspaces are inclusive, accessible, intergenerational, creative, and minimise maintenance to deliver fit for purpose facilities.
- d. **Sustainable** - Playspaces that are robust and consider lifecycle management of the asset.

Playspace Categories

Hierarchy - Council has developed a hierarchy of playspaces which serve different residential catchments and have different usage capacity. This ensures playspace facilities meet the diverse needs of the community.

1. **Local playspaces** - These make up 80% of the playspace network and are located within local parks within walking distance. They provide play equipment for the local community and visitors tend to stay for 1-2 hours.
2. **District playspaces** - These are medium size playspaces which provide for the Social Plan District but may also serve the region with play equipment catering to multiple age groups. They are accessible by bicycle, car, and bus and are co-located with other facilities such as parking, toilets, shared paths or sports facilities to maximize use and are inclusive. Visitors tend to stay longer than 2 hours. Examples are Sohler Park, Ourimbah, and Terrigal Rotary Park
3. **Regional playspaces** - These are currently the largest of Council's playspace network which attract and serve people across the whole region and beyond. They typically have the greatest capacity and variety of equipment, may include specialist or iconic facilities and aim to improve inclusion, activation, and social engagement across all ages, abilities and cultural groups. They can be co-located with other facilities such as community centres and sporting facilities to maximise opportunities. Visitors tend to stay half a day as they incorporate a wide array of complimentary picnic facilities, car parking and associated activities such as half-courts, skate areas and bike paths. Examples include Saltwater Creek Park, Long Jetty, Peninsula Recreation Precinct, Umina, and Canton Beach Community Park for the visually impaired.
4. **Destination Playspaces** - This is a facility that has the capacity to provide unique experiences that attract people and tourists from beyond the council boundary due to its size, iconic status and ability to provide interest and activity for most of the day. It should cater to a regional tourist catchment and requires the provision of additional supporting infrastructure and facilities such as a kiosk, amenities and parking or co-location with additional recreation experiences. There will likely be flow-on effects for nearby local businesses. The proposed Gosford Waterfront is an example of this category of facility on the Central Coast.
5. **Nature /Alternative** - These are creative, low maintenance, nature-based or innovative alternatives developed in local parks where traditional equipment has been permanently removed. The site may be re-purposed to include structural components such as 'learn-to-ride paths, robust and interactive elements or outdoor gyms, fitness equipment or a combination of elements.



Inclusive Playspaces

Inclusive playspaces provide for all abilities, gender, sex, age, or background not just access.

Accessible playspace design mainly addresses the movement needs of those with disabilities.

Council is committed to making places more inclusive and has been at the forefront of this as seen in the early development of places such as Saltwater Creek Park, Long Jetty, Peninsula Recreation Precinct Umina, and Canton Beach Community Park for the visually impaired.

This practice of providing inclusive playspaces will continue in line with the NSW Govt 2018 'Everyone can Play' guidelines and the Central Coast Council Disability Inclusion Action Plan to meet the needs of our diverse range of users.

All new district and regional playspaces aim to be inclusive and address the 'Can I get there, Can I stay, Can I play' principles.

The NSW Guidelines can be viewed online by going to everyonecanplay.nsw.gov.au

Celebrate and continue to create opportunities for inclusion where all people feel welcome and participate in community life.

CSP Objective A2 - Belonging

Intergenerational Playspaces

Intergenerational playspaces focus on creating spaces that provide common activities for both the young and old to support informal physical activity throughout a lifetime. The decrease in movement time amongst families due to the changing circumstances of modern living, can be lifelong and because motor development is similar amongst young and old, experts recommend activities focusing on strength and coordination.

The benefits of intergenerational meeting places and activities that challenge not only children, but also the skill and fitness of parents and grandparents will be catered for within CCC's network of playspaces.

On the Central Coast, the number of people aged over 60 is expected increase and comprise 28.9% of the population by 2036. The need for these intergenerational playspaces will increase.

Intergenerational playspaces are inclusive as they foster social organisation and co-existence rather than those with the typical age-specific facilities, thereby counteracting age stereotypes, and promoting, social integration, tolerance and emotional and social skills.



Supporting Infrastructure

Supporting infrastructure enables a 'whole of park' and inclusive approach to maximise the usability, enjoyment and accessibility of playspaces.

CCC endeavours to use existing infrastructure in proximity to playspaces for efficiency and cost.

The typical supporting infrastructure and playspace category it may be associated with include:

- a. Fencing/ natural barriers – as required for safety or restriction
- b. Shade shelters – District, Regional
- c. Natural shade – all playspaces
- d. Picnic shelters – District, Regional
- e. Seating – all playspaces
- f. Drinking water – District, Regional
- g. Car parking – Regional, some District if existing
- h. Amenities/Toilet Blocks – Regional or as existing co-location
- i. Signage – at all playspaces
- j. Lighting – not provided
- k. Paths – all playspaces
- l. Exercise/fitness equipment – assessed as required

Linking nature playspaces with environmental programs – to play and learn!

CSP Theme Green

Sustainable Management

Council has developed a 20 year renewal program to sustainably manage the lifecycle of playspaces which provides a long term strategy for repair, replacement and upgrade. This is informed by:

- Operational inspections and routine maintenance conducted every 3 months (including vandalism & graffiti)
- An independent condition and compliance audit conducted every 3 years.

The playspace management program is not a static management tool or system. It is a dynamic program subject to change and modification as playspaces evolve, legislation and expectations of the community change. It is reviewed every three years to ensure the key directions are consistent with community needs.

Council manages risk by ensuring that the design, construction and maintenance of playspaces comply with national and state legislation and guidelines.





Strategic Planning Actions

The following key strategic actions are proposed to realise the full potential of existing facilities.

Short Term

- Continue the 20 year playspace renewal program and 3 year independent condition audits to inform the capital works program.
- Incorporate intergenerational playspace design as part of new regional playspace projects to address the demographic demand at both ends of the 5 year age group, (> 65 and 5-9yr old) and foster intergenerational co-operation and inclusion.
- Develop CCC Playspace Design for Sustainability Guidelines to incorporate into design and construction contracts and promote consistent design principles.
- Improve access in existing local playspaces within districts where there is a higher than average proportion of people needing mobility assistance.
- Provide natural shade in all playspace designs and develop a tree planting program within reserves to support the provision of shade near playspaces.

Long Term

- Investigate the development of a destination playspace for the region as a tourist destination and to meet community demand
- Develop a long term sustainable and affordable program of improving access in existing local playspaces where there are deficiencies
- Investigate linking inclusive, regional and nature playspaces to Council's Tourism Opportunity Plan programs to improve activation and awareness of our spaces.
- Develop a program for activating nature playspaces within Council's community outdoor learning programs.
- Develop a program of works for the inclusion of exercise stations in association with shared paths
- Actively pursue partnership/grant opportunities to deliver playspace outcomes

We are listening and delivering on what the community has asked for as outlined in Council's Community Strategic Plan

CSP Objective A1 - Belonging



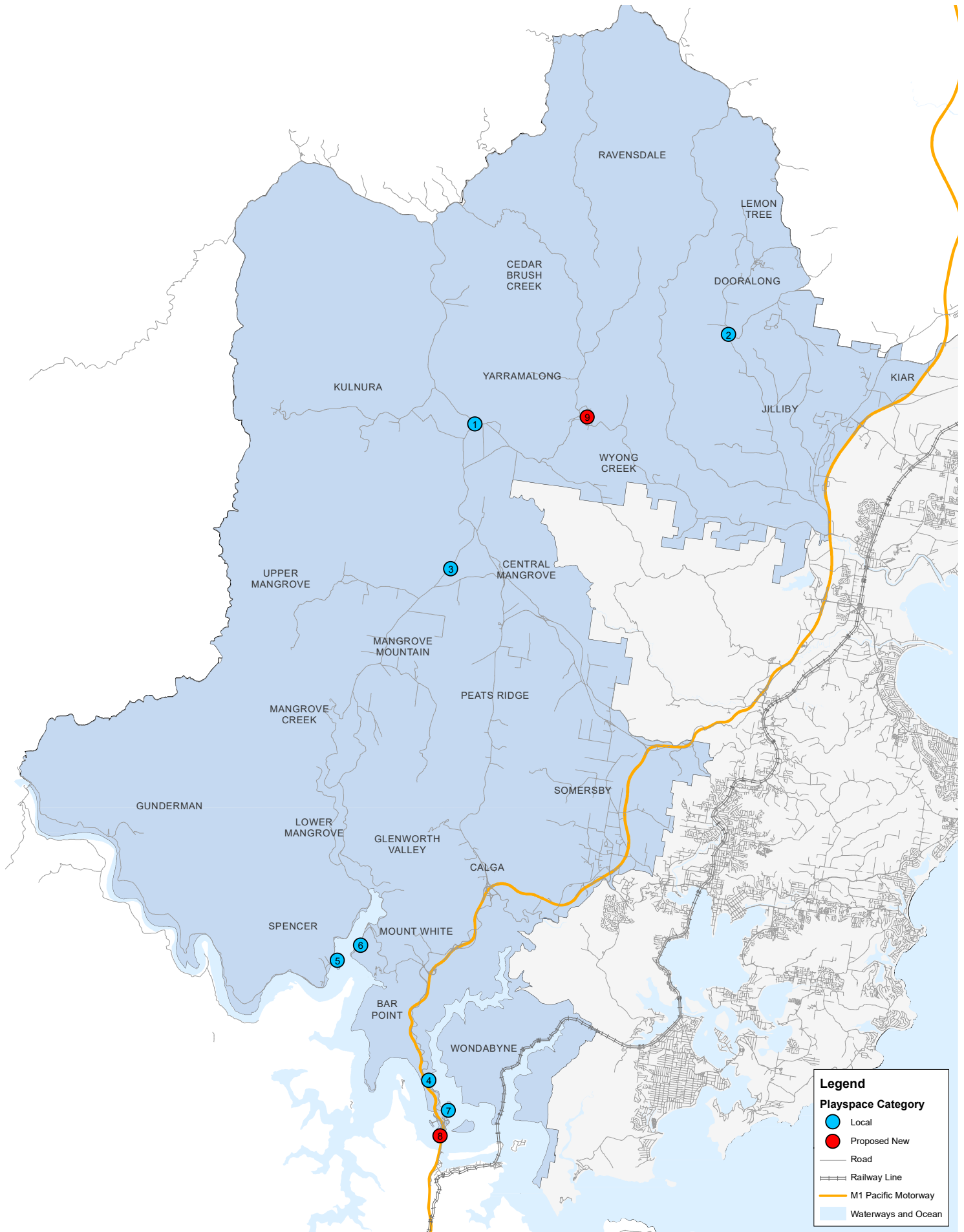
Playspace Locations

The following maps and tables articulate the playspace distribution across the region based on existing facilities and future development.

Distribution aligns with residential density and for some social planning districts with limited sites, upgrades of existing playspaces ensures provision is met.

1. Mountains and Valleys District

Item	Name	Suburb	Category
1	Kulnura Pioneer Park	Kulnura	Local
2	Dooralong Hall Reserve	Dooralong	Local
3	Bloodtree Oval	Mangrove Mountain	Local
4	Cheero Point Playground	Cheero Point	Local
5	Spencer Waterfront	Spencer	Local
6	Wendoree Park Playground	Wendoree Park	Local
7	Mooney Mooney Playground	Mooney Mooney	Local
8	Deerubbun Mooney Mooney	Mooney Mooney	Proposed New
9	Jack Gear Reserve	Yarramalong	Proposed New



DISCLAIMER

These maps have been compiled from various sources and the publisher and/or contributors accept no responsibility for any injury, loss or damage arising from the use, error or omission therein. While all care is taken to ensure a high degree of accuracy, users are invited to notify Councils Geospatial Group of any map discrepancies. No part of this map may be reproduced without prior written Permission.

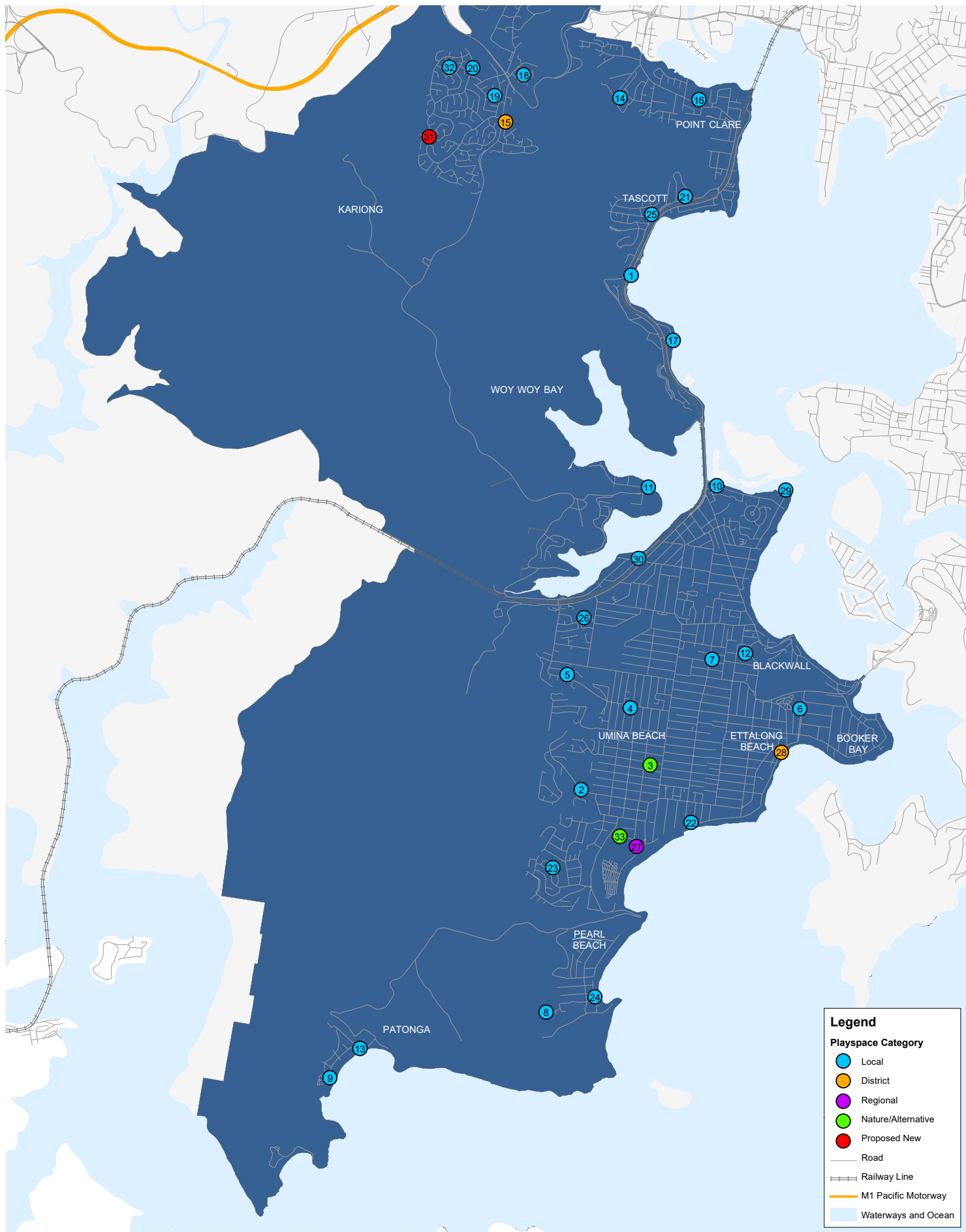
© 2019 Central Coast Council All Rights Reserved. Produced by CCC Spatial Information Services.

Coordinate System: GDA 1994 MGA Zone 56
Projection: Transverse Mercator



2. West Brisbane Water & Peninsula

Item	Name	Suburb	Category
1	Koolewong Waterfront Reserve	Koolewong	Local
2	Brisbane Avenue Playground	Umina Beach	Local
3	Australia Avenue Playground	Umina Beach	Nature/Alternative
4	Vernon Park	Umina Beach	Local
5	Lentara Road Playground	Umina Beach	Local
6	Ettalong Oval	Ettalong Beach	Local
7	Trafalgar Avenue Playground	Woy Woy	Local
8	Pearl Beach Tennis Courts	Pearl Beach	Local
9	Patonga Caravan And Camping Area	Patonga	Local
10	Pelican Park	Woy Woy	Local
11	Gurdon Reserve	Woy Woy Bay	Local
12	Wallaby Playground	Blackwall	Local
13	Patonga Beach Foreshore	Patonga	Local
14	Wendy Drive Playground	Point Clare	Local
15	Kariong Progress Hall Playground	Kariong	District
16	Fagan Park	Point Clare	Local
17	Couche Park	Koolewong	Local
18	Jarrah Park	Kariong	Local
19	Parry Park	Kariong	Local
20	Kariong Recreation Area	Kariong	Local
21	Melaleuca Park/Seabrook Reserve	Tascott	Local
22	W L Lloyd Park	Umina Beach	Local
23	Cowper Road Playground	Umina Beach	Local
24	Pearl Parade Playground	Pearl Beach	Local
25	Murrumbooe Place Playground	Tascott	Local
26	Nambucca Drive Playground	Woy Woy	Local
27	Umina Recreation Area	Umina Beach	Regional
28	Ettalong Beach Waterfront Reserve	Ettalong Beach	District
29	Woy Woy Lions Park	Woy Woy	Local
30	Stoney Park	Woy Woy	Local
31	Rees Street Reserve	Kariong	Proposed New
32	Nullawa Park	Kariong	Local
33	Umina Tennis Courts	Umina Beach	Nature/Alternative

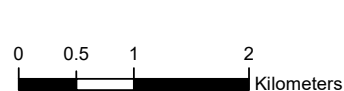


DISCLAIMER

These maps have been compiled from various sources and the publisher and/or contributors accept no responsibility for any injury, loss or damage arising from the use, error or and omission therein. While all care is taken to ensure a high degree of accuracy, users are invited to notify Councils Geospatial Group of any map discrepancies. No part of this map may be reproduced without prior written Permission.

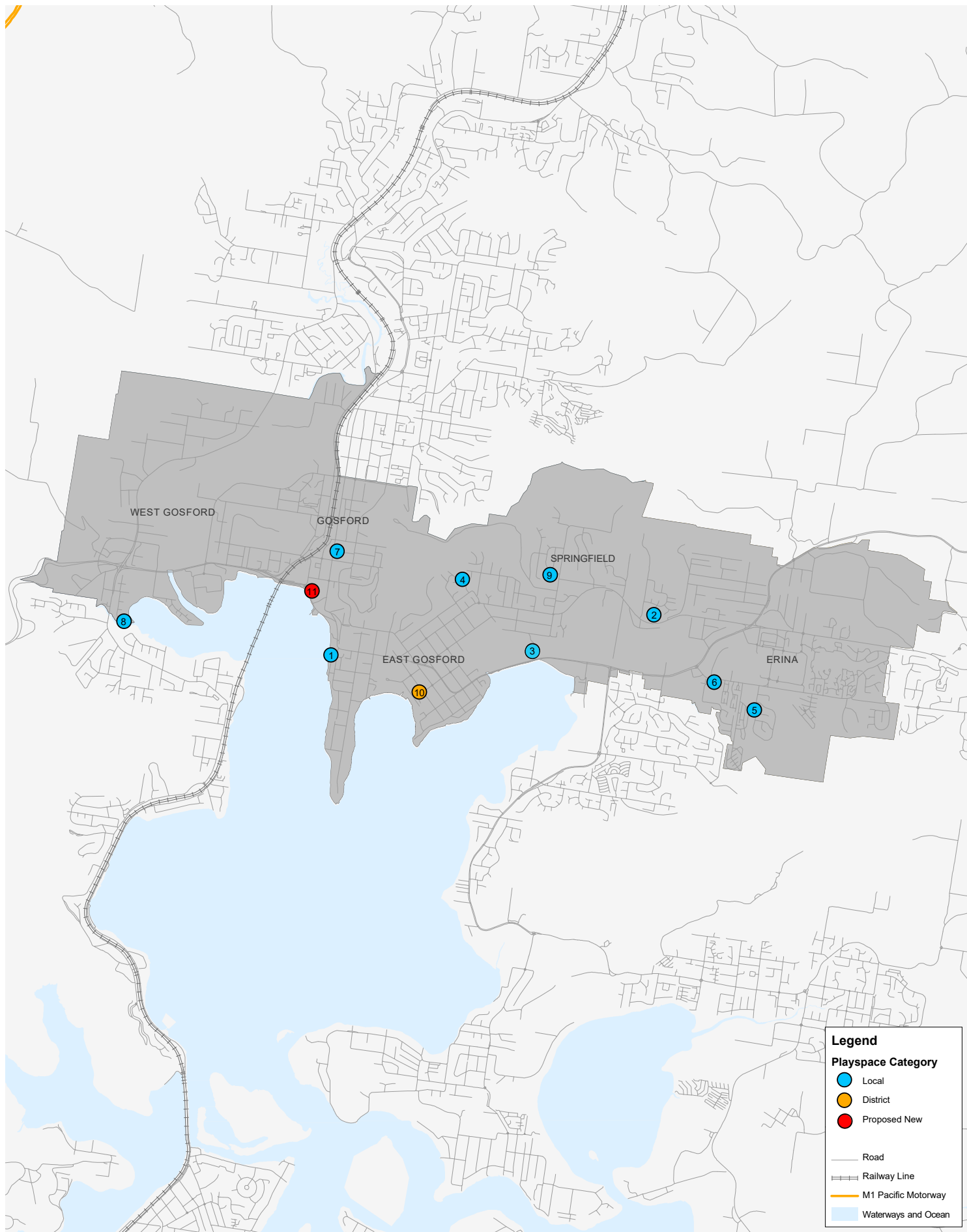
© 2019 Central Coast Council All Rights Reserved. Produced by CCC Spatial Information Services.

Coordinate System: GDA 1994 MGA Zone 56
Projection: Transverse Mercator



3. Gosford Central

Item	Name	Suburb	Category
1	Gosford Lions Park	Gosford	Local
2	Mahogany Close Playground	Springfield	Local
3	Hylton Moore Park	East Gosford	Local
4	Sullens Avenue Playground	East Gosford	Local
5	Bronzewing Drive Reserve	Erina	Local
6	Erina Oval	Erina	Local
7	Kibble Park	Gosford	Local
8	Uratta Street Playground	West Gosford	Local
9	Bushlands Avenue Playground	Springfield	Local
10	Elizabeth Ross Park	East Gosford	District
11	Leagues Club Field	Gosford	Proposed New



DISCLAIMER

These maps have been compiled from various sources and the publisher and/or contributors accept no responsibility for any injury, loss or damage arising from the use, error or and omission therein. While all care is taken to ensure a high degree of accuracy, users are invited to notify Councils Geospatial Group of any map discrepancies. No part of this map may be reproduced without prior written Permission.

© 2019 Central Coast Council All Rights Reserved. Produced by CCC Spatial Information Services.

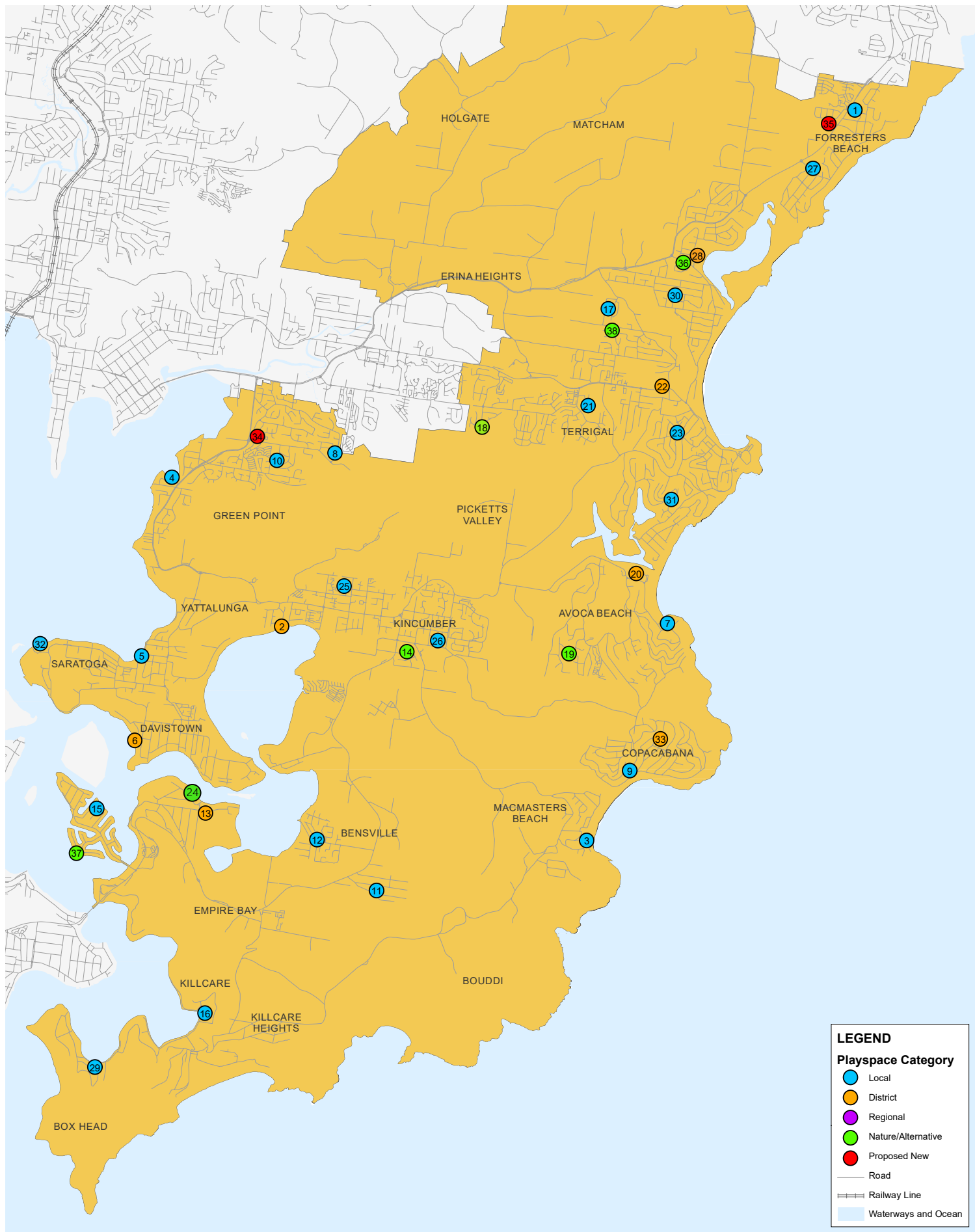
Coordinate System: GDA 1994 MGA Zone 56
Projection: Transverse Mercator

0 0.5 1 2
Kilometers



4. East Brisbane Water and Coastal District

Item	Name	Suburb	Category
1	Albatross Close Reserve	Forresters Beach	Local
2	Broadwater Park	Kincumber	District
3	Benavie Reserve	Macmasters Beach	Local
4	Bayside Drive Reserve	Green Point	Local
5	Jirrambah Avenue Playground	Saratoga	Local
6	Illoura Reserve	Davistown	District
7	Ross Park	Avoca Beach	Local
8	Goondari Reserve	Green Point	Local
9	Shaun Brinklow Park	Copacabana	Local
10	Greenvale Road Playground	Green Point	Local
11	Yarram Road Playground	Bensville	Local
12	Ben Davis Reserve	Bensville	Local
13	Empire Bay Tennis Court	Empire Bay	District
14	Pinyari Close Playground	Kincumber	Nature/Alternative
15	Attunga Close Park	St Huberts Island	Local
16	Stanley Street Playground	Killcare	Local
17	Wycombe Road Playground	Terrigal	Local
18	Bellbird Park	Terrigal	Nature/Alternative
19	Walder Crescent Playground	Avoca Beach	Nature/Alternative
20	Heazlett Park	Avoca Beach	District
21	Duffys Reserve	Terrigal	Local
22	Terrigal Rotary Park	Terrigal	District
23	Drummer Parry Park	Terrigal	Local
24	Sorrento Road Reserve	Empire Bay	Nature/Alternative
25	Tuross Close Reserve	Kincumber	Local
26	The Lavender Patch	Kincumber	Local
27	Archibold Park	Forresters Beach	Local
28	Wamberal Park	Wamberal	District
29	Turo Reserve	Pretty Beach	Local
30	Rysdyk Parade Playground	Wamberal	Local
31	Palm Gully Park	North Avoca	Local
32	Saratoga Oval	Saratoga	Local
33	Susan Fahey Park	Copacabana	District
34	Sun Valley Park	Green Point	Proposed New
35	Forresters Beach Park	Forresters Beach	Proposed New
36	Wamberal Memorial Hall	Wamberal	Nature/Alternative
37	Solstice Place Reserve	St Huberts Island	Nature/Alternative
38	Cheryl Avenue Playground	Terrigal	Nature/Alternative



DISCLAIMER

These maps have been compiled from various sources and the publisher and/or contributors accept no responsibility for any injury, loss or damage arising from the use, error or and omission therein. While all care is taken to ensure a high degree of accuracy, users are invited to notify Councils Geospatial Group of any map discrepancies. No part of this map may be reproduced without prior written Permission.

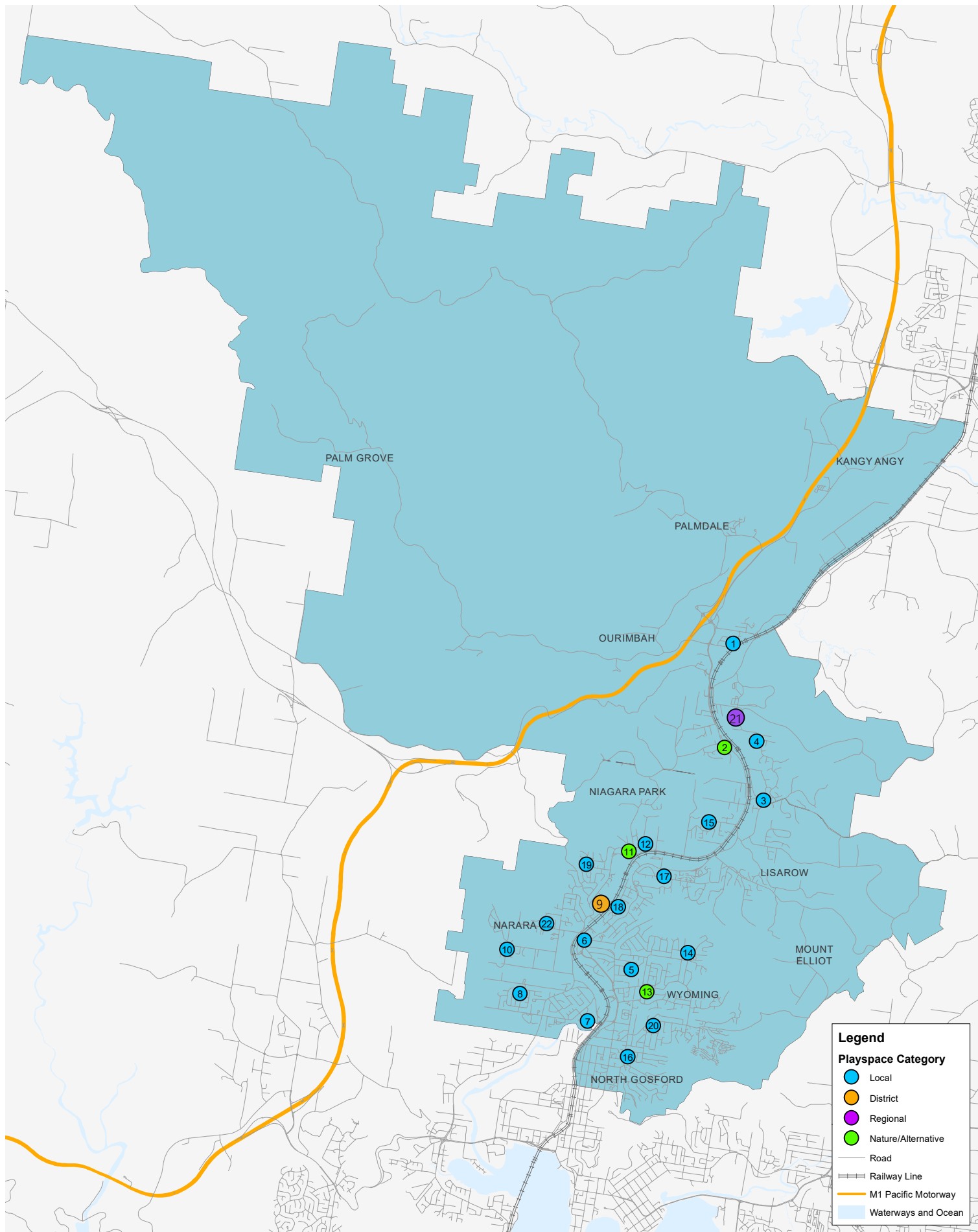
© 2019 Central Coast Council All Rights Reserved. Produced by CCC Spatial Information Services.

Coordinate System: GDA 1994 MGA Zone 56
Projection: Transverse Mercator



5. Narara Valley and Ourimbah District

Item	Name	Suburb	Category
1	Lara Close Reserve	Ourimbah	Local
2	Lions Park - Pacific Hwy	Ourimbah	Nature/Alternative
3	Cutrock Park	Ourimbah	Local
4	Shirley St Reserve	Ourimbah	Local
5	Alan Davidson Park	Wyoming	Local
6	Goonak Parade Playground	Narara	Local
7	Gavenlock Oval	Narara	Local
8	Mitchell Park	Narara	Local
9	Willari Avenue Playground	Narara	District
10	Treeline Close Playground	Narara	Local
11	Delaware Road Playground	Niagara Park	Nature/Alternative
12	Condula Park	Lisarow	Local
13	Orange Parade Playground	Wyoming	Nature/Alternative
14	Pangari Close Playground	Wyoming	Local
15	Cambourn Drive Playground	Lisarow	Local
16	Jarrett Street Playground	North Gosford	Local
17	Caroline Cox Reserve	Lisarow	Local
18	Karina Drive Playground	Narara	Local
19	Wyunda Court Playground	Narara	Local
20	Maidens Brush Oval	Wyoming	Local
21	Bill Sohler Park - Ken Cook Way	Ourimbah	Regional
22	Canning Park - Lunderson Drive	Narara	Local



DISCLAIMER

These maps have been compiled from various sources and the publisher and/or contributors accept no responsibility for any injury, loss or damage arising from the use, error or omission therein. While all care is taken to ensure a high degree of accuracy, users are invited to notify Councils Geospatial Group of any map discrepancies. No part of this map may be reproduced without prior written Permission.

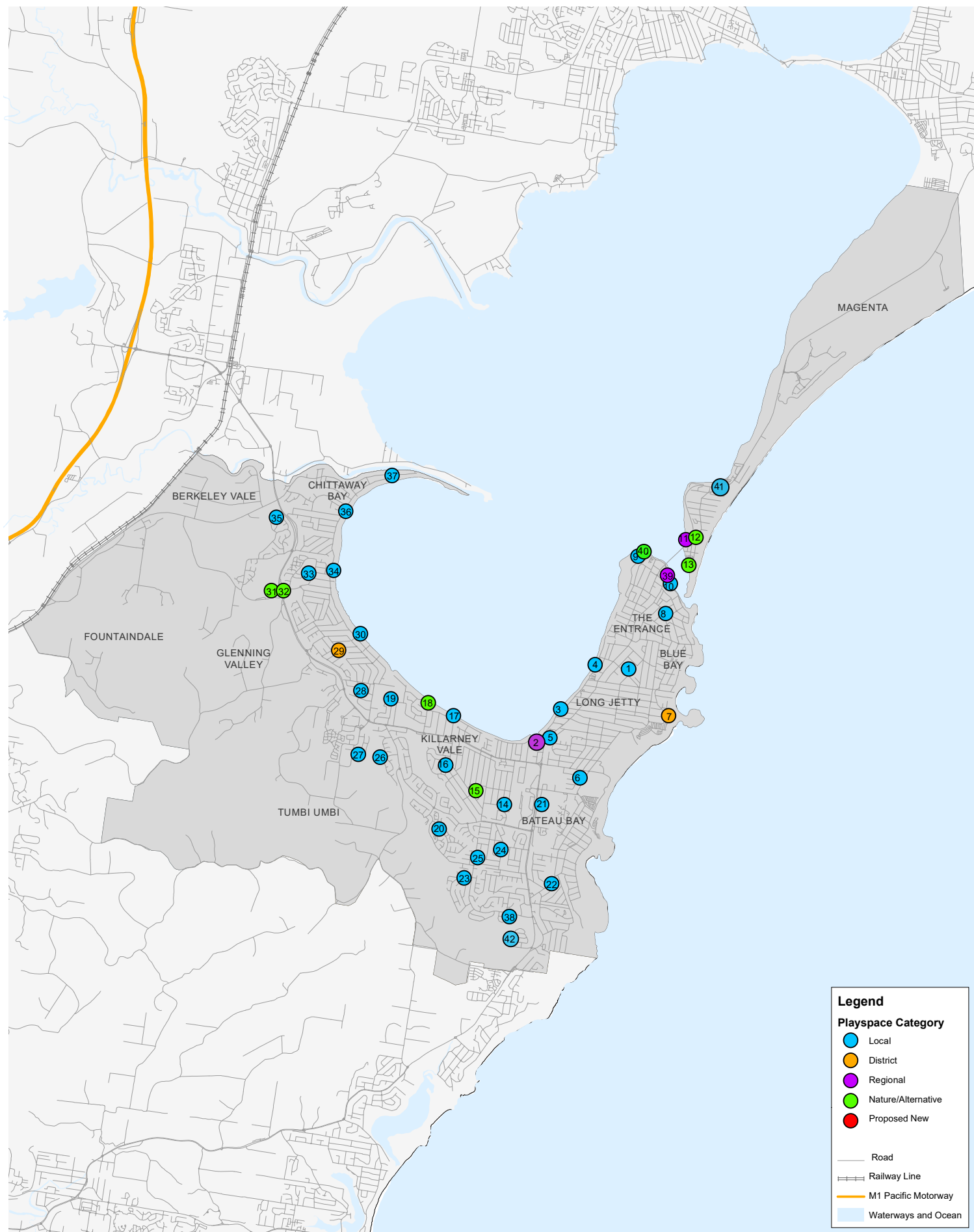
© 2019 Central Coast Council All Rights Reserved. Produced by CCC Spatial Information Services.

Coordinate System: GDA 1994 MGA Zone 56
Projection: Transverse Mercator



6. Southern Lakes and The Entrance District

Item	Name	Suburb	Category
1	Jubilee Oval	Long Jetty	Local
2	Saltwater Creek Reserve	Long Jetty	Regional
3	Foreshore Reserve Elsemier St	Long Jetty	Local
4	Foreshore Reserve Archbold St	Long Jetty	Local
5	Lions Park (Rocket Park)	Long Jetty	Local
6	Earl St Reserve	Shelly Beach	Local
7	Swadling Park	Toowoan Bay	District
8	Shore Park	The Entrance	Local
9	Picnic Point Reserve	The Entrance	Local
10	Memorial Park East	The Entrance	Local
11	Terilbah Reserve	The Entrance North	Regional
12	Walter And Edith Dennis Park	The Entrance North	Nature/Alternative
13	Karagi Point	The Entrance North	Nature/Alternative
14	Mccoll Park	Killarney Vale	Local
15	Pioneer Park	Killarney Vale	Nature/Alternative
16	Avery St Reserve	Killarney Vale	Local
17	Foreshore Reserve	Killarney Vale	Local
18	George Fulcher Reserve	Killarney Vale	Nature/Alternative
19	Adelaide Oval Reserve	Killarney Vale	Local
20	The Cottage Playground	Bateau Bay	Local
21	Edsacc Oval	Bateau Bay	Local
22	Wandella Ave	Bateau Bay	Local
23	Sir Joseph Banks Oval	Bateau Bay	Local
24	Apex Park Avignon Reserve	Bateau Bay	Local
25	Bateau Bay Mini Park	Bateau Bay	Local
26	Parkland Garden Reserve	Tumbi Umbi	Local
27	Blue Crane Cl Reserve	Tumbi Umbi	Local
28	Watson Park	Berkeley Vale	Local
29	Kurraba Oval /Tennis Courts	Berkeley Vale	District
30	Ewen Howlett Reserve	Berkeley Vale	Local
31	Ted Doyle Sporting Complex	Glenning Valley	Nature/Alternative
32	Berkeley Park	Berkeley Vale	Nature/Alternative
33	Myrtle Brush Park	Berkeley Vale	Local
34	Bluebell Park	Berkeley Vale	Local
35	Ashwood Reserve	Glenning Valley	Local
36	Lions Park	Chittaway Bay	Local
37	Aloha Dr Reserve	Chittaway Bay	Local
38	Pat Morley Oval	Bateau Bay	Local
39	Memorial Park West	The Entrance	Regional
40	Picnic Point Reserve - Spacenet	The Entrance	Nature/Alternative
41	The Entrance North Recreation Reserve Trust	The Entrance North	Local
42	Bateau Bay Afl Oval	Bateau Bay	Local



DISCLAIMER

These maps have been compiled from various sources and the publisher and/or contributors accept no responsibility for any injury, loss or damage arising from the use, error or omission therein. While all care is taken to ensure a high degree of accuracy, users are invited to notify Councils Geospatial Group of any map discrepancies. No part of this map may be reproduced without prior written Permission.

© 2019 Central Coast Council All Rights Reserved. Produced by CCC Spatial Information Services.

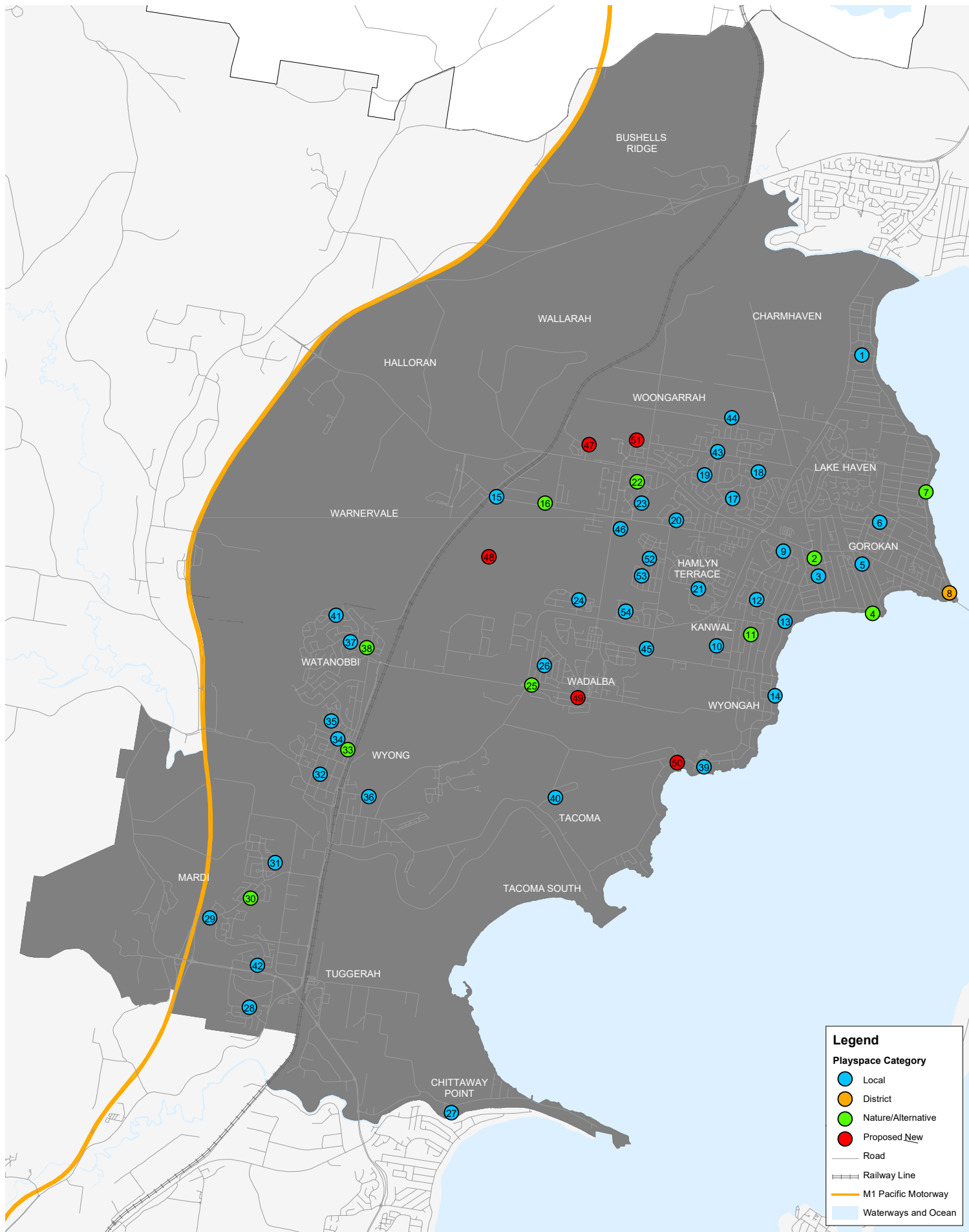
Coordinate System: GDA 1994 MGA Zone 56
 Projection: Transverse Mercator

0 0.5 1 2
 Kilometers



7. Wyong Warnervale and Gorokan District

Item	Name	Suburb	Category
1	Charmhaven Park - Parkside Drv Reserve	Charmhaven	Local
2	Arlington St Reserve	Gorokan	Nature/Alternative
3	Mini Park - Vena St Reserve	Gorokan	Local
4	Dalnott Reserve - Pipeclay Pt	Gorokan	Nature/Alternative
5	Brennon St Reserve	Gorokan	Local
6	Gorokan Community Park	Gorokan	Local
7	Rowan Park - Hilary Park The Corso	Gorokan	Nature/Alternative
8	Wallarah Point Peace Park	Gorokan	District
9	Walker Park - Walker Ave	Kanwal	Local
10	Kanwal Oval	Kanwal	Local
11	Swan St Reserve	Kanwal	Nature/Alternative
12	Dean Ave Reserve	Kanwal	Local
13	Craigie Park	Wadalba	Local
14	Oakland St Reserve	Wyongah	Local
15	Warnervale Station Park	Warnervale	Local
16	Wanervale Athletic Field	Warnervale	Nature/Alternative
17	Mataram Ridge Park - Lupin Close	Woongarra	Local
18	Applegum Park - Planetree Cres	Woongarra	Local
19	Peppercorn Ave Reserve	Woongarra	Local
20	Highland Cres Reserve	Hamlyn Terrace	Local
21	Skyhawk Ave Reserve	Hamlyn Terrace	Local
22	She Oak Close Reserve	Hamlyn Terrace	Nature/Alternative
23	Oregon Place Reserve	Hamlyn Terrace	Local
24	Willow Park - Daphne Close	Hamlyn Terrace	Local
25	Settlement Drive Reserve	Wadalba	Nature/Alternative
26	Owl Park	Wadalba	Local
27	Sunshine Reserve	Chittaway Point	Local
28	Tonkiss St Reserve	Tuggerah	Local
29	Woolmers Cres Reserve	Mardi	Local
30	Mathew Cct Reserve	Mardi	Nature/Alternative
31	Brushwood Circuit	Mardi	Local
32	Frank Ballance Anzac Ave	Wyong	Local
33	Apex Park Pacific Hwy	Wyong	Nature/Alternative
34	Owen Ave Reserve	Wyong	Local
35	Woodward Ave Reserve	Wyong	Local
36	Baker Park	Wyong	Local
37	Guardian Road Reserve (Harrington Close)	Watanobbi	Local
38	Brent Close Reserve	Watanobbi	Nature/Alternative
39	Tuesday St Reserve	Tuggerawong	Local
40	Hillcrest Ave Reserve	Tacoma	Local
41	Spotted Gum Reserve	Watanobbi	Local
42	Woodbury Park Estate	Mardi	Local
43	Woongarra Community Park	Woongarra	Local
44	Woongarra Sports Facility	Woongarra	Local
45	Wadalba Sports Facility	Wadalba	Local
46	Hamlyn Terrace Sporting Fields	Hamlyn Terrace	Local
47	Hilltop Park - Hakone Rd	Woongarra	Proposed New
48	Virginia Road Park	Warnervale	Proposed New
49	Voyager Street Park	Wadalba	Proposed New
50	Tuggerawong Road Reserve (Warner Ave)	Tuggerawong	Proposed New
51	Ridgetop Park	Woongarra	Proposed New
52	Xavier Park	Hamlyn Terrace	Local
53	Isaac Park	Hamlyn Terrace	Local
54	Loretto Way Park	Hamlyn Terrace	Local



Legend

Playspace Category

- Local
- District
- Nature/Alternative
- Proposed New

— Road

— Railway Line

— M1 Pacific Motorway

— Waterways and Ocean



DISCLAIMER

These maps have been compiled from various sources and the publisher and/or contributors accept no responsibility for any injury, loss or damage arising from the use, error or omission therein. While all care is taken to ensure a high degree of accuracy, users are invited to notify Councils Geospatial Group of any map discrepancies. No part of this map may be reproduced without prior written Permission.

© 2019 Central Coast Council All Rights Reserved. Produced by CCC Spatial Information Services.

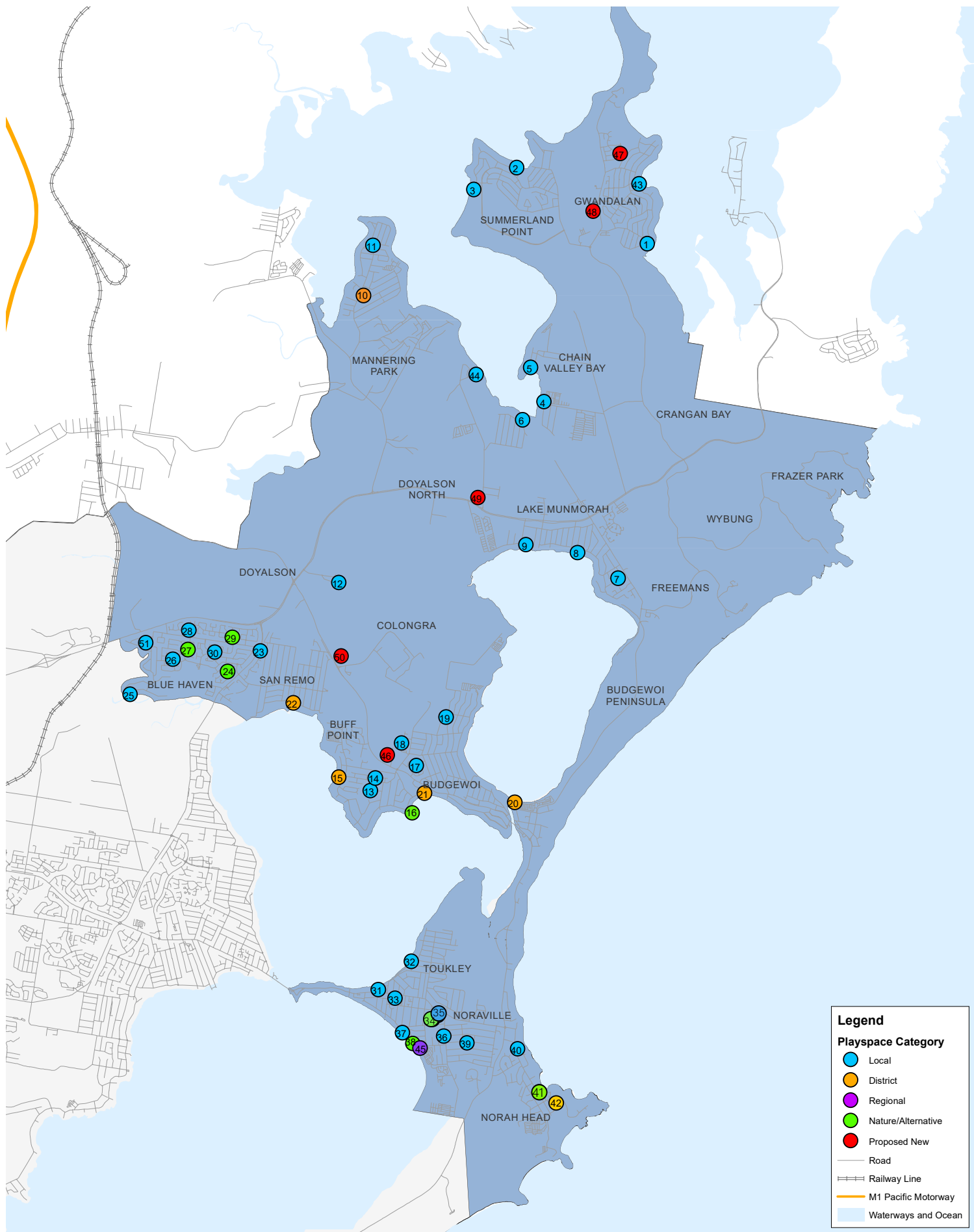
Coordinate System: GDA 1994 MGA Zone 56

Publication: Technical Manager



8. Northern Lakes, San Remo - Budgewoi & Toukley

Item	Name	Suburb	Category
1	Lions Park - Gambam Rd	Gwandalan	Local
2	Boat Harbour Reserve	Summerland Point	Local
3	Sandy Beach Reserve	Summerland Point	Local
4	Mullaway Rd Reserve	Chain Valley Bay	Local
5	Sunset Parade Reserve	Chain Valley Bay	Local
6	Joshua Porter Reserve	Chain Valley Bay	Local
7	Patrick Kelly Reserve	Lake Munmorah	Local
8	Tom Burke Reserve - Anita Ave	Lake Munmorah	Local
9	Colongra Bay Rd Reserve	Lake Munmorah	Local
10	Mannering Park Courts	Mannering Park	District
11	James Vale Reserve	Mannering Park	Local
12	Denman St Reserve	Doyalson	Local
13	Mootay St	Buff Point	Local
14	Scout Hall Park	Buff Point	Local
15	Edgewater Park	Buff Point	District
16	Green Point Reserve - Buff Point Ave	Buff Point	Nature/Alternative
17	Scenic Circle Reserve	Budgewoi	Local
18	Carmel Ave Reserve	Halekulani	Local
19	Arnold Close Reserve	Halekulani	Local
20	Mackenzie Reserve	Budgewoi	District
21	Woodland Parkway Reserve - Sonoma Rd	Budgewoi	District
22	John Pete Howard Reserve	San Remo	District
23	Callen Ave Reserve	San Remo	Local
24	Marsden Rd Reserve - Miller Cres	Blue Haven	Nature/Alternative
25	Pump Station Park	Blue Haven	Local
26	Lady Laurel Dr Reserve	Blue Haven	Local
27	Colorado Drv Reserve	Blue Haven	Nature/Alternative
28	Wongala Ave Reserve	Blue Haven	Local
29	Redgum Res Elkington Drive	Blue Haven	Nature/Alternative
30	St Lawrence Ave Reserve	Blue Haven	Local
31	Toukley Gardens - Main Rd	Toukley	Local
32	Osbourne Park - Peel Street	Toukley	Local
33	Toukley Village Green	Toukley	Local
34	Heador St Reserve	Toukley	Nature/Alternative
35	Toukley Skate Park - Ray St	Toukley	Local
36	Harry Moore Oval	Toukley	Local
37	Canton Beach Foreshore Reserve (3) West	Canton Beach	Local
38	Canton Beach Foreshore Reserve (2) Middle	Canton Beach	Nature/Alternative
39	Irene Pde Reserve	Noraville	Local
40	Jenny Dixon Reserve	Norah Head	Local
41	Mazlin Reserve	Norah Head	Nature/Alternative
42	Young St Reserve	Norah Head	District
43	Gwandalan Lioness Park	Gwandalan	Local
44	Kingfisher Reserve	Kingfisher Shores	Local
45	Canton Beach Foreshore Reserve (1) All Access	Canton Beach	Regional
46	Colongra Bay Oval	Colongra	Proposed New
47	Fairwater Drive	Gwandalan	Proposed New
48	Tunkuwallin Oval	Gwandalan	Proposed New
49	Lake Munmorah Playspace	Doyalson North	Proposed New
50	Koala Park	Colongra	Proposed New
51	Spring Creek Reserve (Bayami Reserve)	Blue Haven	Local



DISCLAIMER

These maps have been compiled from various sources and the publisher and/or contributors accept no responsibility for any injury, loss or damage arising from the use, error or omission therein. While all care is taken to ensure a high degree of accuracy, users are invited to notify Councils Geospatial Group of any map discrepancies. No part of this map may be reproduced without prior written Permission.

© 2019 Central Coast Council All Rights Reserved. Produced by CCC Spatial Information Services.

Coordinate System: GDA 1994 MGA Zone 56
Projection: Transverse Mercator

0 0.5 1 2
Kilometers





Central Coast Council

2 Hely Street, Wyong | 49 Mann Street, Gosford

P 1300 463 954

E ask@centralcoast.nsw.gov.au

W centralcoast.nsw.gov.au