



5 LANDS COASTAL WALKWAY MASTERPLAN REPORT - PART B

Prepared for Gosford City Council

March 2012



TERRIGAL NORTH AVOCA AVOCA COPACABANA MACMASTERS BEACH

Adopted 7 February 2012

The development of this document has been 50% funded by the NSW Government's Department of Planning, Metropolitan Greenspace Program 2008.



Prepared by The Design Partnership for Gosford City Council

Our Ref: P:\PROJECTS\2012\12.009 GCC 5 Lands Walk Masterplan Updates\06 TDP Sub Projects\Final Masterplan Report Part B

THE DESIGN PARTNERSHIP

PO Box 6325
West Gosford NSW 2250
T 02 4324 8554
F 02 4324 6379
www.thedesignpartnership.com.au

This document, including the information and intellectual property contained is the property of Gosford City Council and is subject to copyright. The document must not be reproduced or adapted in whole or in part in any form without the permission of the copyright owner.

ISSUE	DATE	DESCRIPTION	AUTHOR	CHECKED BY
A	28.03.11	Draft	ZC	TH
B	03.05.11	Draft	ZC	KR
C	05.05.11	Final	ZC	TH
D	16.05.11	Final	ZC	TH
E	07.06.11	Public Exhibition	ZC	KR
	07.02.12	ADOPTED BY COUNCIL		
F	27.03.12	Final issue incorporating Council amendments	ZC	KR



CONTENTS

PART B: CONCEPT MASTERPLAN

- 1.0 INTRODUCTION
- 2.0 PROPOSED ROUTE
- 3.0 CONCEPT MASTERPLAN
 - 3.1 Macmasters Beach
 - 3.2 Copacabana
 - 3.3 Avoca
 - 3.4 North Avoca
 - 3.5 Terrigal
- 4.0 DESIGN PRINCIPLES
- 5.0 SIGNAGE CONCEPT
- 6.0 PATH TYPES
- 7.0 PROGRAM + SCHEDULE OF WORKS
- 8.0 FUNDING OPPORTUNITIES
- 9.0 REFERENCES

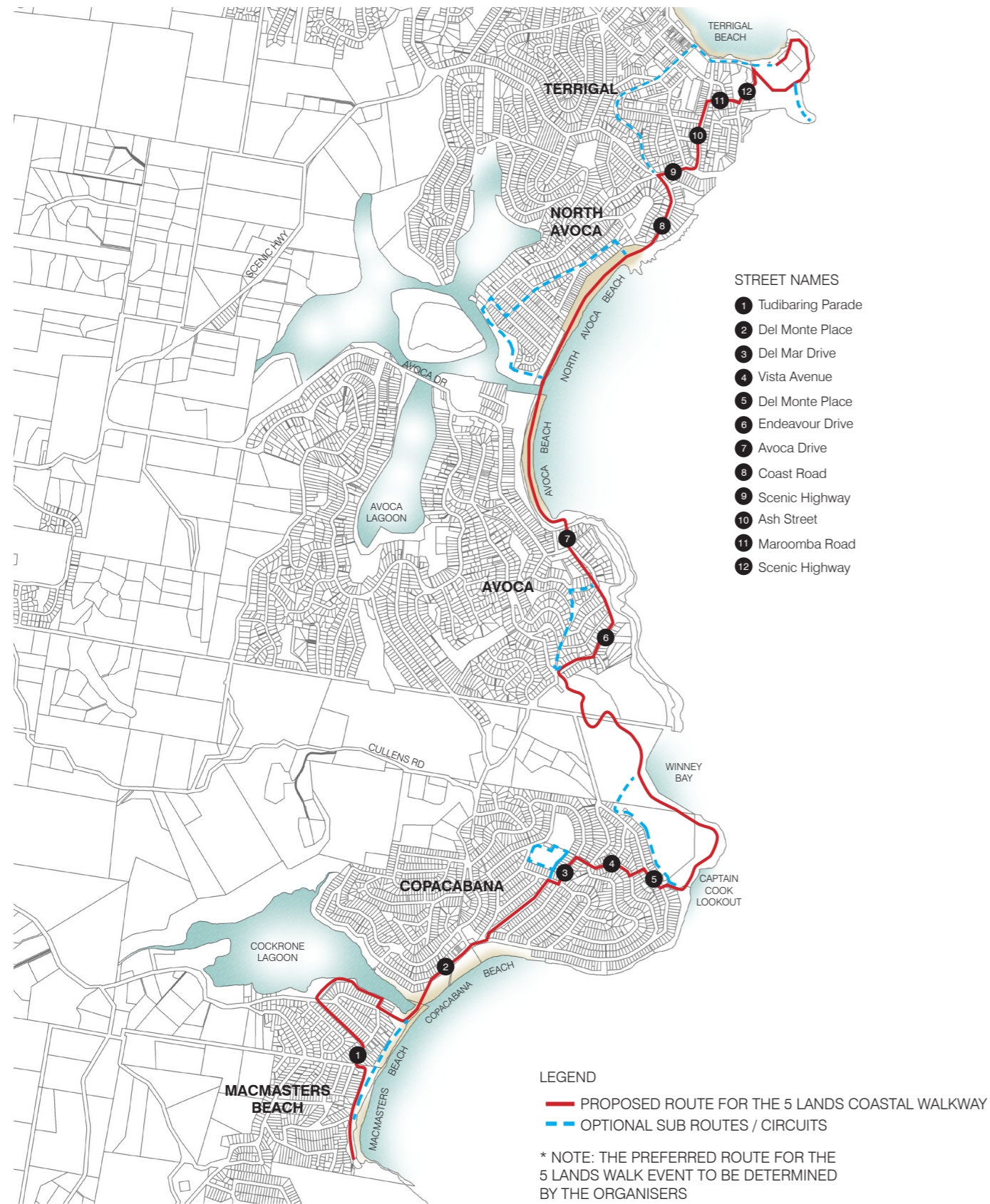


Figure 1: Proposed route

1.0 INTRODUCTION

Andrews Neil Urban Design Group (UDG) has been engaged by Gosford City Council (GCC) to prepare an overall Masterplan and associated report for the project known as The 5 Lands Coastal Walk. These works are part of an undertaking by GCC to provide a permanent walking trail that connects the five coastal communities of Macmasters Beach, Copacabana, Avoca Beach, North Avoca and Terrigal on the New South Wales Central Coast.

The need for a permanent walkway arose out of a community and Council initiative to hold an annual event of cultural and spiritual activities along a 10.5 kilometer coastal walkway between Macmasters Beach and Terrigal. This event is referred to in the report as the 5 Lands Walk Event. On the day of the event each of the 5 Lands (Macmasters Beach, Copacabana, Avoca, North Avoca and Terrigal) hosts a range of activities which showcase their community and culture. The first event took place in 2006 and since this time it has continued to grow.

The increasing popularity of the 5 Lands Walk Event has highlighted the need to create a permanent coastal walkway that is accessible to walkers year round. It is anticipated that the Five Lands Walk Event will utilise much of this route for the annual cultural event however road closures will still be required due to the large numbers that attend the event.

The existing route currently follows an informal trail along coastal beaches, bushland and urban streets. GCC has identified that the route requires greater definition, which will provide users with accessible tracks, trails, walkways, viewing platforms and associated infrastructure.

During the preliminary works of the project, the community and stakeholders have been consulted and their experience of the existing walk has helped guide the development of the Masterplan. Central Coast Tourism is also part of the consultancy process as the 5 Lands Coastal Walkway and Event has significant tourism potential for the area.

Part A of this report contains information on the history of the 5 Lands Coastal Walkway and Event, analysis, opportunities and constraints and recommendations for the preferred final route and associated infrastructure.

Part B of this report contains the Concept Masterplan, proposed staging of works and suggested funding opportunities.

2.0 PROPOSED ROUTE

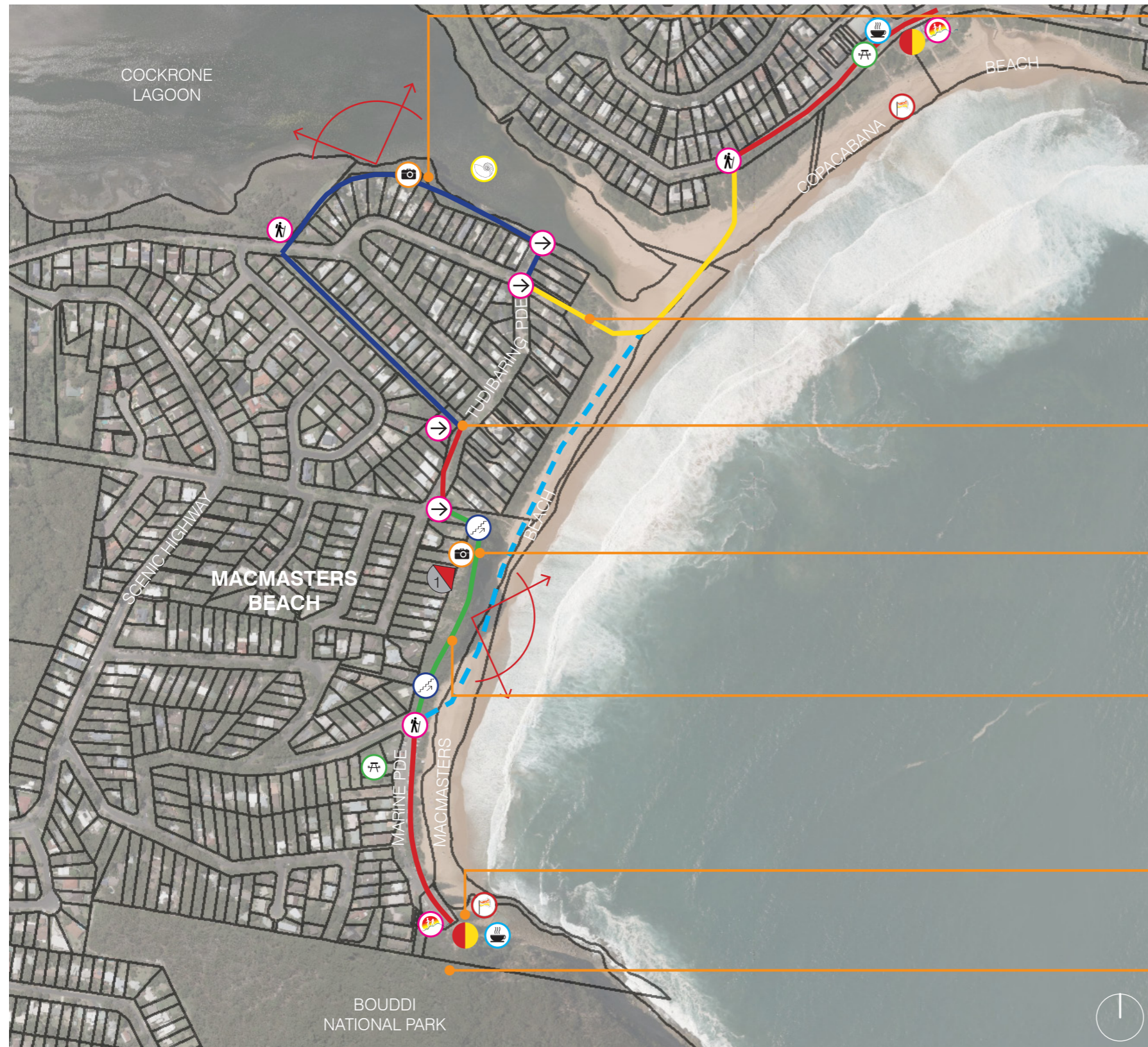
The proposed route is shown as a red line on the map opposite. There is an opportunity to develop a number of optional sub routes and circuits that complement the main walkway and provide variations of scenery and terrain.

The proposed route:

- Offers a variety of terrains for varying fitness levels.
- Maximises the opportunity for ocean and lagoon views and maintains a strong connection to the coastline.
- Avoids busy major roads where possible.
- Improves connectivity for existing residents.
- Takes walkers on a journey through ever changing landscapes.
- Acknowledges the unique qualities of each land and provides opportunities for the local community to become involved in their area and 'make it their own'.
- Enhances community understanding about the culture and history of where they live and the relationships between the 5 Lands.
- Easily breaks down into sub circuit routes for concentrated activity.

3.0 CONCEPT MASTERPLAN

3.1 MACMASTERS BEACH



COCKRONE LAGOON VIEWING AREA

Opportunity to integrate 5 Lands Coastal Walkway with Cockrone Lagoon Foreshore Walkway.



PATH FOLLOWS EXISTING BEACH ACCESS

CORRIBEG RESERVE

Minor park upgrade.

PROPOSED NEW REST AREA/VIEW POINT

Quiet viewing area with bench seating overlooking the ocean. Refer to Artist impression.

PROPOSED CLIFF WALK

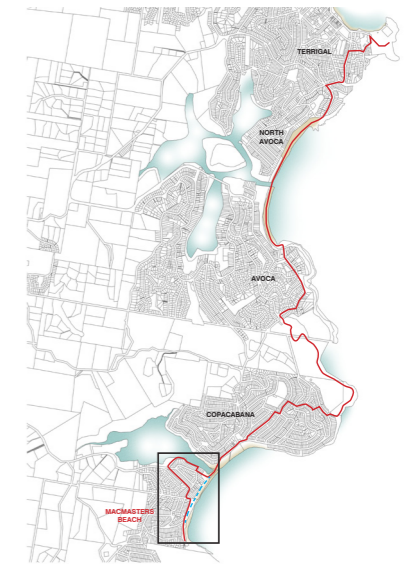
Opportunity to provide public access along cliff top. Rehabilitate native bushland adjacent to property boundaries.

WALK START/FINISH

Proposed start/end of the 5 Lands Coastal Walkway.

CONNECTION TO BOUDDI NATIONAL PARK

Opportunity for walkers to extend their journey along the Bouddi National Park Coastal Trail.



LOCATION PLAN
Not to scale

LEGEND

- PATROLLED BEACH
Public toilet facilities available
- SURF LIFE SAVING CLUB
- CAR PARKING
- REST AREA
- LOOKOUT / VIEW POINT
- POINTS OF INTEREST
- PROPOSED NEW STEPS
- ARTIST IMPRESSION LOCATION

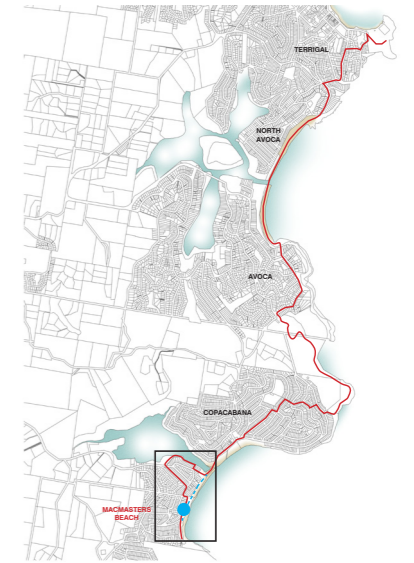
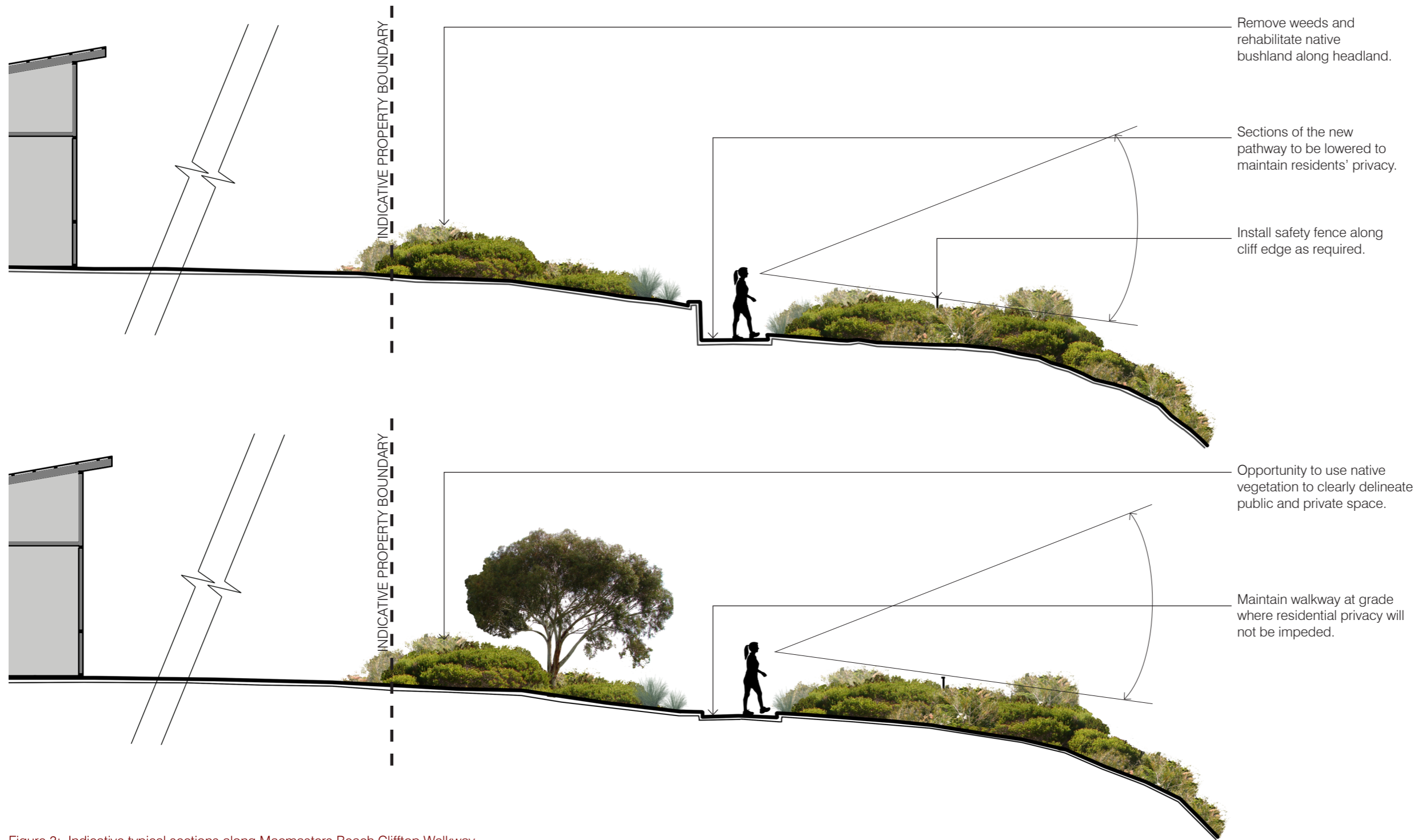
PATH TYPES

- BUSH TRAIL
- CRUSHED GRAVEL/DECOMPOSED GRANITE
- CONCRETE FOOTPATH
- FEATURE PAVING
- BEACH / BEACH ACCESSWAY
- SEALED ROAD
- OPTIONAL SUB ROUTE/CIRCUIT

SIGNAGE LOCATIONS

- INFORMATION BOARDS
- TRACKHEAD SIGNAGE
- DIRECTIONAL SIGNAGE

Figure 2: Concept Masterplan - Macmasters Beach



LOCATION PLAN
Not to scale

Figure 3: Indicative typical sections along Macmasters Beach Clifftop Walkway
SCALE 1:50



 Figure 4: Artist Impression - Macmasters Beach Clifftop Walkway Rest Area

3.0 CONCEPT MASTERPLAN

3.2 COPACABANA



PROPOSED NEW REST AREA/VIEW POINT
Proposed rustic rest area with seating.

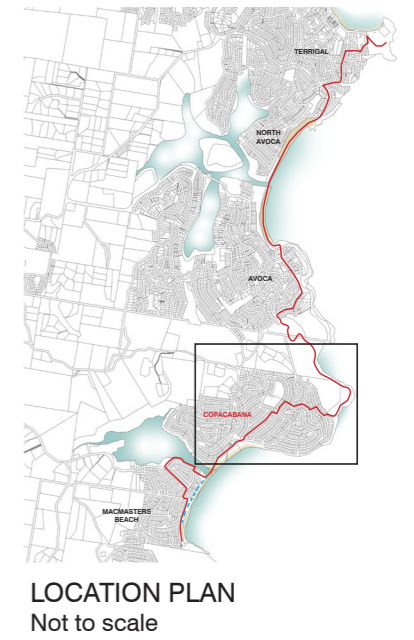
BUSH TRAIL
Trail to be minimum 15m away from cliff face with potential side tracks to safe lookout points. Provide safety fencing where required.

NEW STEPS
Proposed new steps between Vista Ave and Del Monte Place.

UPGRADE CAPTAIN COOK LOOKOUT
Opportunity to upgrade Captain Cook Lookout and provide a new rest area overlooking Winney Bay near the lookout carpark. Provide accessibility for people of all ages and abilities. Refer to Artist Impression and plan view.

LINEAR PARK
Proposed new bridge across existing drainage corridor. Upgrade corridor with new pathway and landscaping. Identify options to distinguish property boundaries and plant natural screens to delineate public and private open space and to minimise any impacts on residents.

UPGRADE REST AREA
Opportunity to upgrade rest area adjacent to surf club with new seating, viewing area and landscaping.



LEGEND

- PATROLLED BEACH
Public toilet facilities available
- SURF LIFE SAVING CLUB
- CAR PARKING
- REST AREA
- LOOKOUT / VIEW POINT
- POINTS OF INTEREST
- PROPOSED NEW STEPS
- ARTIST IMPRESSION LOCATION

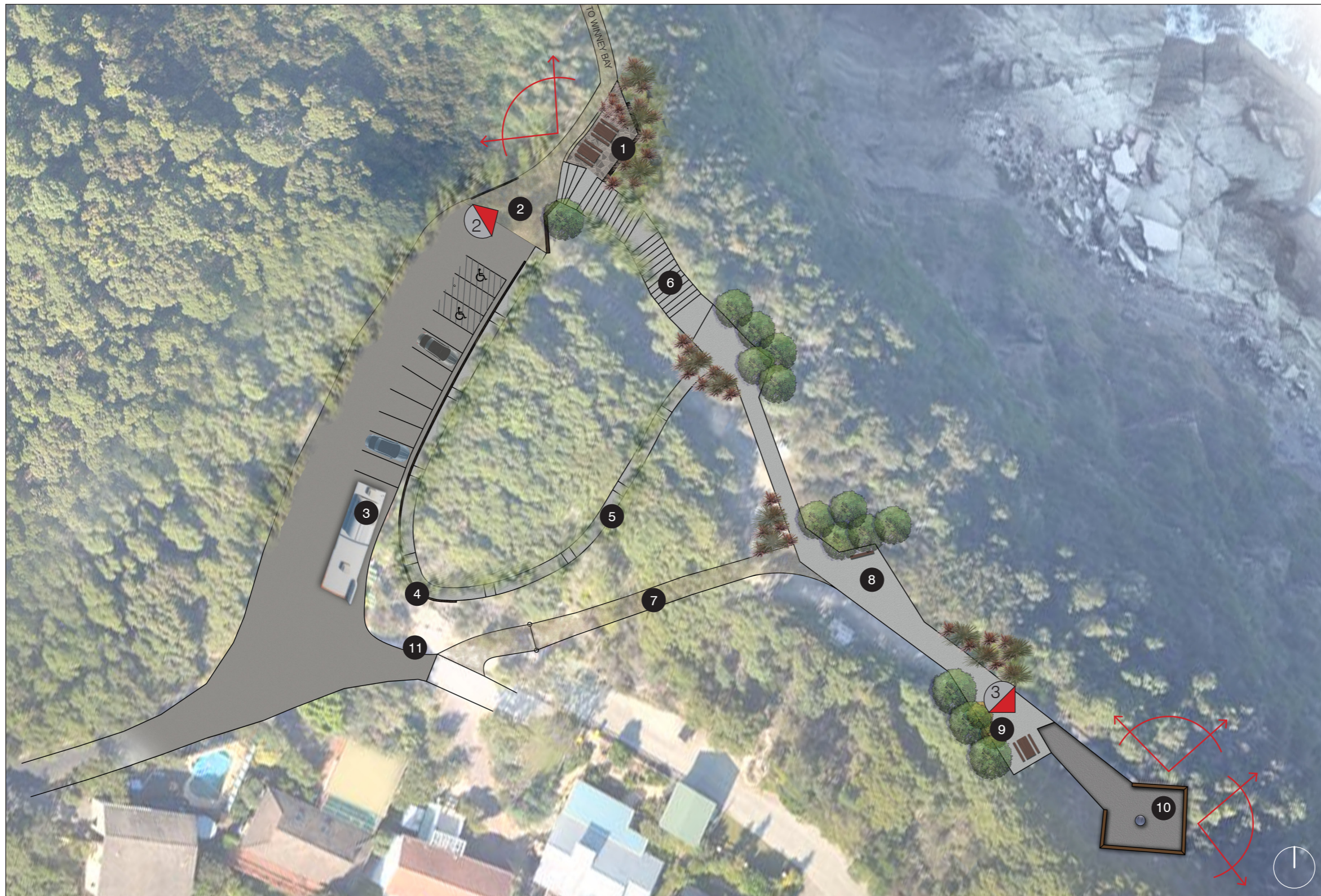
PATH TYPES

- BUSH TRAIL
- CRUSHED GRAVEL/DECOMPOSED GRANITE
- CONCRETE FOOTPATH
- FEATURE PAVING
- BEACH / BEACH ACCESSWAY
- SEALED ROAD
- OPTIONAL SUB ROUTE/CIRCUIT

SIGNAGE LOCATIONS

- INFORMATION BOARDS
- TRACKHEAD SIGNAGE
- DIRECTIONAL SIGNAGE

Figure 5: Concept Masterplan - Copacabana



LEGEND

- 1 Proposed new lookout overlooking Winney Bay. Opportunity to provide picnic tables and overhead shelter. Refer to Artist Impression.
 - 2 Clearly define entry threshold at rear of carpark. Direct visitors to lookout or onto the Winney Bay Trail.
 - 3 Upgrade carpark with new line markings, disabled parking and bus parking.
 - 4 New entry signage.
 - 5 Opportunity to provide a new access ramp to the lookout.
 - 6 Upgrade existing steps with a new surface.
 - 7 Maintain access road for maintenance and emergency vehicles.
 - 8 Formalise surface to improve disability access and provide rest points in small niches.
 - 9 New rest area at entry to lookout.
 - 10 Upgrade Captain Cook lookout. Extend gathering area and cantilever over slope to improve views to the south. Integrate seating and interpretive information into the design. Opportunity to work with local Indigenous artists to replace the existing obelisk with a new piece of public art. Refer to Artist Impression.
 - 11 Provide concrete pad for residents garbage bin collection.
-  Artist impression location

Figure 6: Concept Masterplan - Captain Cook Lookout

SCALE 1:500



2 Figure 7: Artist Impression - Winney Bay Lookout



3 Figure 8: Artist Impression - Captain Cook Lookout



4 Figure 9: Artist Impression - Copacabana Lineal Park

3.0 CONCEPT MASTERPLAN

3.3 AVOCA



HUNTER PARK

Upgrade park and carparking area as per the Avoca Masterplan prepared for Gosford City Council.

NEW VIEWING DECK

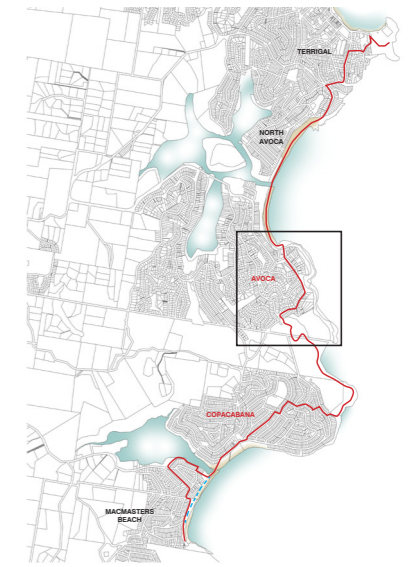
Proposed multipurpose viewing area at the end of Arden Avenue suitable for temporal art displays or small musical performances.

NEW STEPS

Proposed new steps between Endeavour Drive and Avoca Drive. Refer to Artist Impression.

WATER TOWER

Well known local landmark. Provide car parking area in clearing adjacent to Endeavour Drive. Opportunity for local artist to paint Skillion artwork from each years 5 Lands Walk event on water tower. Refer to Artist Impression.



LOCATION PLAN
Not to scale

LEGEND

- PATROLLED BEACH
Public toilet facilities available
- SURF LIFE SAVING CLUB
- CAR PARKING
- REST AREA
- LOOKOUT / VIEW POINT
- POINTS OF INTEREST
- PROPOSED NEW STEPS
- ARTIST IMPRESSION LOCATION

PATH TYPES

- BUSH TRAIL
- CRUSHED GRAVEL/DECOMPOSED GRANITE
- CONCRETE FOOTPATH
- FEATURE PAVING
- BEACH / BEACH ACCESSWAY
- SEALED ROAD
- OPTIONAL SUB ROUTE/CIRCUIT

SIGNAGE LOCATIONS

- INFORMATION BOARDS
- TRACKHEAD SIGNAGE
- DIRECTIONAL SIGNAGE

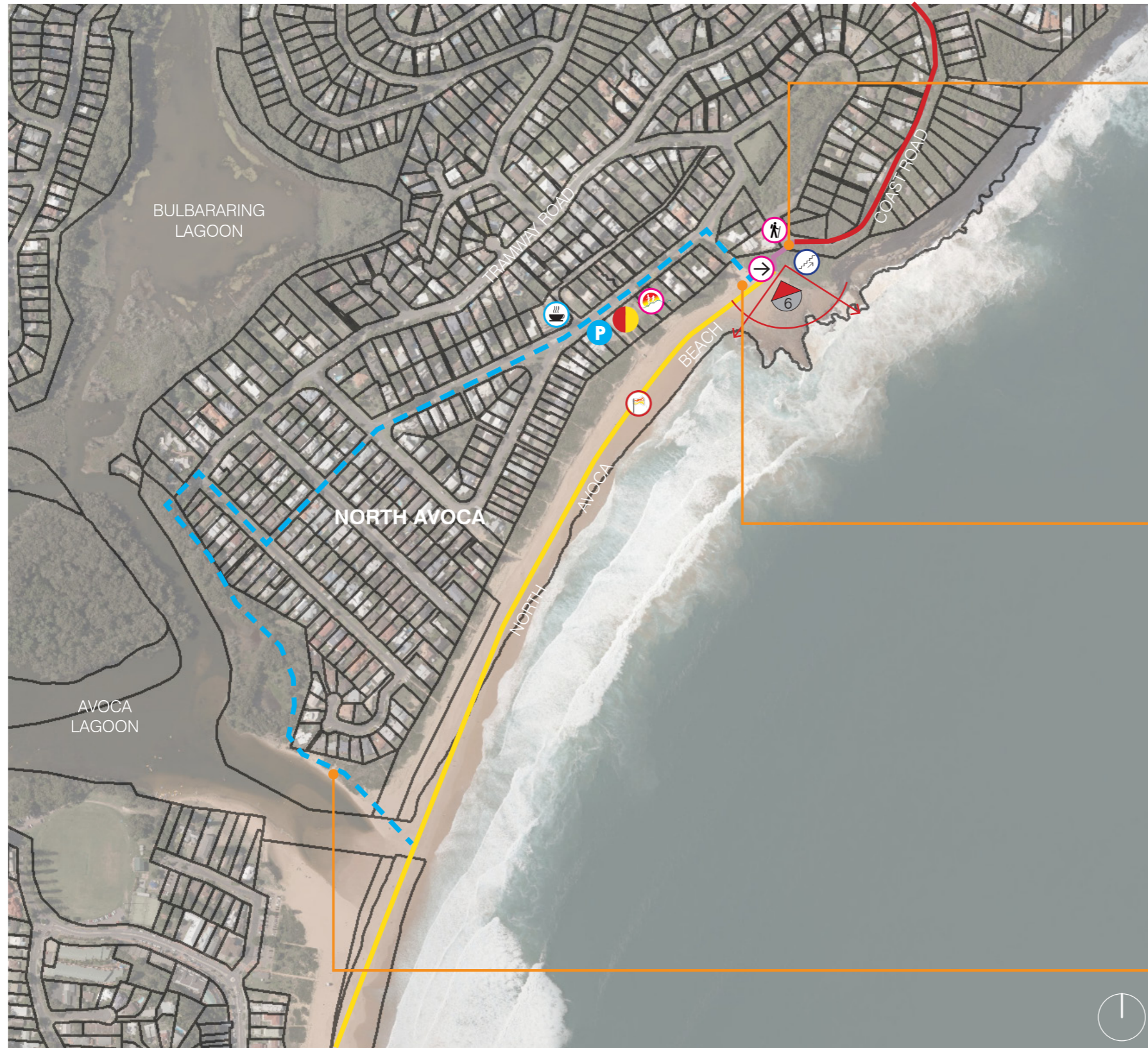
Figure 10: Concept Masterplan - Avoca



5 Figure 11: Artist Impression - Avoca Steps

3.0 CONCEPT MASTERPLAN

3.4 NORTH AVOCA



NEW STEPS

Proposed new steps from North Avoca Beach to Coast Road. Refer to Artist Impression.



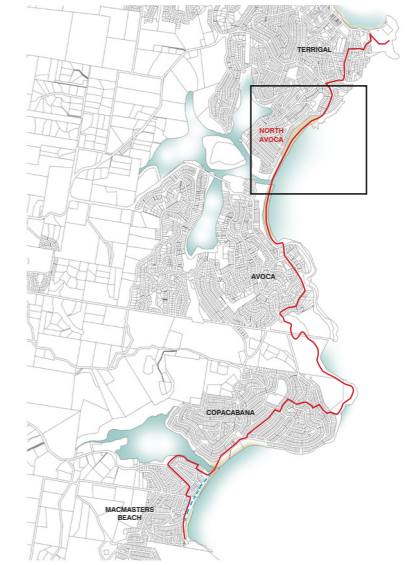
NORTH AVOCA HEADLAND

Colourful flowers appear in Spring and Summer along the beach walkway at North Avoca.



AVOCA LAGOON TRAIL

Optional side trail along the northern edge of Avoca Lagoon.



LOCATION PLAN
Not to scale

LEGEND

- PATROLLED BEACH
Public toilet facilities available
- SURF LIFE SAVING CLUB
- CAR PARKING
- REST AREA
- LOOKOUT / VIEW POINT
- POINTS OF INTEREST
- PROPOSED NEW STEPS
- ARTIST IMPRESSION LOCATION

PATH TYPES

- BUSH TRAIL
- CRUSHED GRAVEL/DECOMPOSED GRANITE
- CONCRETE FOOTPATH
- FEATURE PAVING
- BEACH / BEACH ACCESSWAY
- SEALED ROAD
- OPTIONAL SUB ROUTE/CIRCUIT

SIGNAGE LOCATIONS


- INFORMATION BOARDS
- TRACKHEAD SIGNAGE
- DIRECTIONAL SIGNAGE

Figure 12: Concept Masterplan - North Avoca



Figure 13: Concept Masterplan - North Avoca steps

LEGEND

- 1 Install signage at entry to steps.
- 2 Opportunity to rehabilitate bushland adjacent to apartments.
- 3 Proposed viewing deck and rest area with seating.
- 4 Staircase to be discreet and blend into the cliffside.
- 5 Provide landing and directional signage at base of staircase.
-  Artist impression location



HEADLAND VIEWS

There are excellent views of the headlands looking south from the proposed new viewing deck at North Avoca.



6 Figure 14: Artist Impression - North Avoca Steps

3.0 CONCEPT MASTERPLAN

3.5 TERRIGAL



TERRIGAL HAVEN

Connect 5 Lands Coastal Walkway with recently completed works at Terrigal Haven.



WALK START/FINISH

Formal start/finish of the 5 Lands Coastal Walkway.

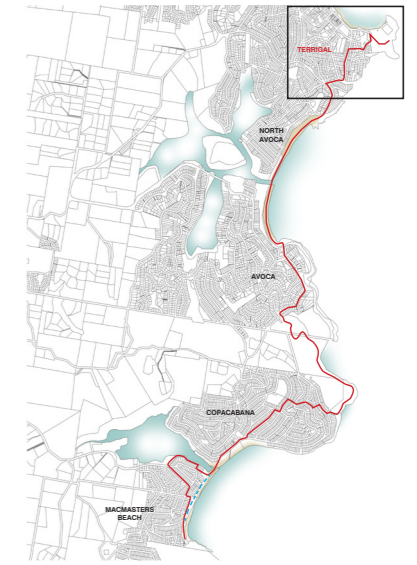


ASH STREET

The 5 Lands Coastal Walkway follows Ash Street through Terrigal. The Crown Plaza Hotel acts as a visual landmark in the distance.

INTERSECTION UPGRADE

Proposed new refuge island to improve pedestrian safety at the Tramway Road, Scenic Highway intersection. Provide new concrete footpath between Kurrawyba Avenue and Ash Street.



LOCATION PLAN
Not to scale

LEGEND

- PATROLLED BEACH
- Public toilet facilities available
- SURF LIFE SAVING CLUB
- CAR PARKING
- REST AREA
- LOOKOUT / VIEW POINT
- POINTS OF INTEREST
- PROPOSED NEW STEPS
- ARTIST IMPRESSION LOCATION

PATH TYPES

- BUSH TRAIL
- CRUSHED GRAVEL/DECOMPOSED GRANITE
- CONCRETE FOOTPATH
- FEATURE PAVING
- BEACH / BEACH ACCESSWAY
- SEALED ROAD
- OPTIONAL SUB ROUTE/CIRCUIT

SIGNAGE LOCATIONS

- INFORMATION BOARDS
- TRACKHEAD SIGNAGE
- DIRECTIONAL SIGNAGE

Figure 15: Concept Masterplan - Terrigal

4.0 DESIGN PRINCIPLES

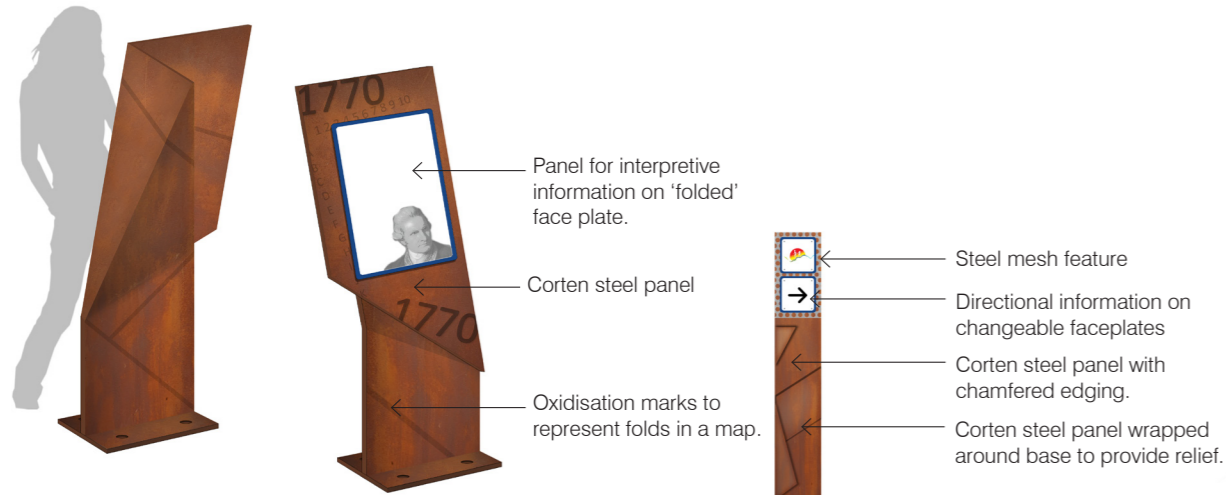
- Walkway design to be sympathetic to the coastal character of the region and harmonise with the surrounding landscape.
- Maintain the 'natural' integrity of trails through bushland areas.
- Improve key intersections for pedestrian safety.
- Utilise symbols that are internationally recognisable to accommodate international walkers.
- Provide difficulty rating for individual tracks.
- Integrate public art into the infrastructure at lookouts, staircases, furniture, signage and wayfinding markers.
- Liaise with the Aboriginal community to incorporate Aboriginal art into new infrastructure at Captain Cook Lookout.
- Design flexible spaces which encourage interaction and discussion.
- Promote connections to other walks in the area including the Coastal Walk through Bouddi National Park and potential future connections to Wyong Shire through Forresters Beach and along the coastline.
- Materials should be contemporary in nature and contribute to the character of each of the 5 Lands. They should be durable and low maintenance.
- Include information about the optional side trails in literature about the walkway. These routes do not form part of the main route but offer interesting variations from the main trail.
- Promote opportunities for tourism by investigating walking and accommodation packages.
- Provide a unified suite of signs to clearly identify the route of the walk.
- Repeat landscape treatments such as colourful plantings of native flowers at key junctions and thresholds along the entire route.
- Investigate opportunities to develop a downloadable phone app containing information about the walk. This allows the walk to remain a low tech experience whilst providing walkers access to further information if desired.
- Directly consult with residents during the detailed design phase of works proposed at the Macmasters Beach cliff walk and the Copacabana Lineal Park in order to address concerns of safety, vandalism, privacy screening, fencing and maintenance.

5.0 SIGNAGE CONCEPT



Hikers have traditionally navigated using a paper map and compass and over time the carefully folded map becomes worn and creased, with multiple fold lines and dog eared edges. While a physical map will not be necessary to navigate the 5 Lands Coastal Walkway the concept of the well worn map will be referenced through the signage design.

Inspired by the concept of a well used map with countless fold lines and dog ears, rustic materials such as corten steel can be used to produce the impression of a worn map by folding edges and oxidising the steel at different rates.



INTERPRETIVE SIGNAGE

- Interpretive signage should be kept to a minimum along the 5 Lands Coastal Walkway.
- Integrate signage into infrastructure where possible.
- This concept is suitable for use in areas where stand-alone signage is required.

DESIGN STYLE

- Vertical corten steel element with stainless steel faceplates.
- Contemporary style using robust materials.

TYPICAL LOCATION

- Key points of interest. Locations to be determined as required.

➔ DIRECTIONAL SIGNAGE

- Logo
- Directional arrows

DESIGN STYLE

- Vertical corten steel element with stainless steel faceplates.
- Discreet, contemporary style using robust materials.

TYPICAL LOCATION

- Decision points
- Road junctions

📰 INFORMATION BOARDS

- Logo
- General information about the walk, access and transport options etc.
- Route map
- Bulletin board for community activities that relate to the walkway
- Phone app download information
- Opportunity to construct promotional, portable information boards to display at events, at tourist information offices etc.

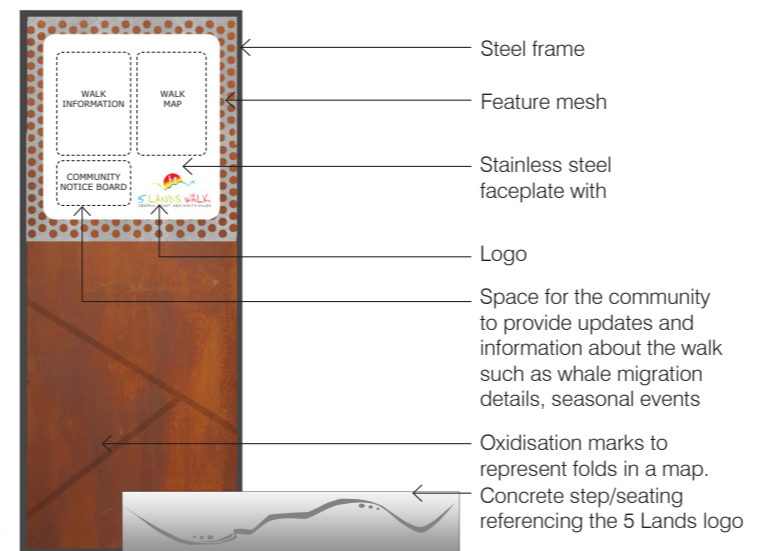
DESIGN STYLE

- Freestanding corten steel vertical element with stainless steel faceplate.
- Contemporary style using robust materials.
- Optional integrated seating.

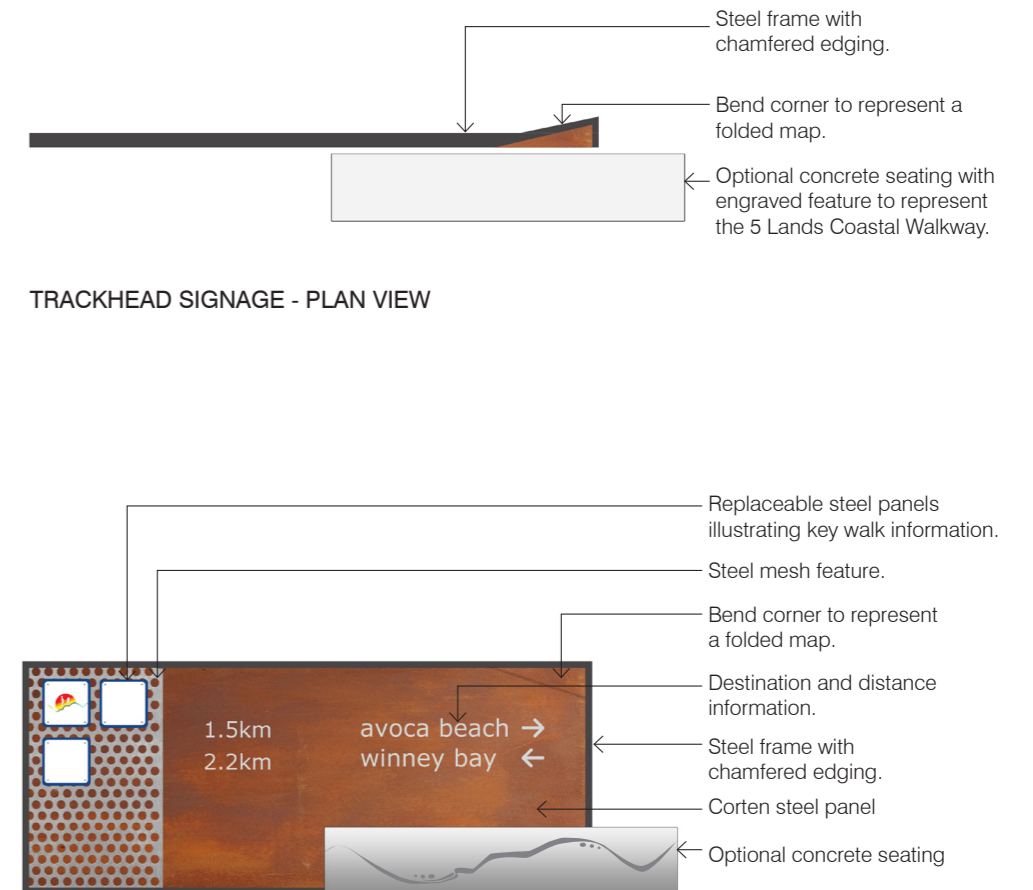
TYPICAL LOCATION

- Walk start and finish
- Near the surfclubs

INFORMATION BOARDS - PLAN VIEW



TRACKHEAD SIGNAGE - PLAN VIEW



🚶 TRACKHEADS

- Logo
- Distance information
- Directional arrows

DESIGN STYLE

- Horizontal corten steel element with a stainless steel faceplates.
- Opportunity to incorporate local knowledge or trivia into modular faceplates.
- Contemporary style using robust materials.
- Optional integrated seating.

TYPICAL LOCATION

- Entry to trails (trackheads)

6.0 PATH TYPES



INFORMAL BUSH TRAIL

- Groomed natural ground surface or mulch with timber steps where required.
- Path width varies between 1m and 3m.

TYPICAL LOCATIONS

- Winney Bay trail.
- Macmasters Beach clifftop walkway.

CONCRETE FOOTPATH/STEPS

- Typically 0.9m - 1.5m wide.
- Connect to existing footpaths.
- Broom finish or no-fines concrete on staircases.

TYPICAL LOCATIONS

- Adjacent to sealed roads.
- Copacabana Lineal Park.
- New Avoca and Copacabana steps.

FEATURE PATH/STEPS

- Sandstone paving, galvanised steel or no-fines concrete
- Typically 1.5m wide path

TYPICAL LOCATIONS

- New North Avoca steps.
- Captain Cook Lookout.
- Steps on Macmasters Beach headland

CRUSHED GRAVEL PATH

- Crushed gravel or decomposed granite
- Typically 1.5m wide path

TYPICAL LOCATIONS

- Around Cockrone Lagoon
- Macmasters beach drainage corridor

7.0 PROGRAM + SCHEDULE OF WORKS

The 5 Lands Coastal Walkway will be developed in stages, as funding becomes available. The following program is a summary of proposed works for each of the 5 Lands.

7.1 MACMASTERS BEACH

- Install signage at start and finish and directional signage along existing trail (Directional signage to be relocated as new sections of the walkway are constructed).
- Install Information Boards near surf clubs.
- Construct clifftop walkway along Macmasters Beach headland including viewing area.
- Rehabilitation of vegetation adjacent to residence's and cliff edge.
- Formalise walking trail along drainage corridor at Corribeg Reserve.
- Minor works upgrade at Corribeg Reserve.



7.2 COPACABANA

- Install trackhead and directional signage (Directional signage to be relocated as new sections of walkway are constructed).
- Install Information Boards near surf clubs.
- Upgrade Captain Cook Lookout including carpark and concrete pathway.
- Construct Winney Bay rest area / viewing area.
- Construct / upgrade bush trail between Captain Cook Lookout and Winney Bay.
- Construct path along Copacabana drainage corridor (Lineal Park) including associated landscape works.
- Construct steps between Vista Avenue and Del Monte Place.



7.3 AVOCA

- Install trackhead and directional signage (Directional signage to be relocated as new sections of walkway are constructed).
- Install Information Boards near surf clubs.
- Regrade service trail from the base of Winney Bay to Avoca water tower.
- Construct Avoca steps between Endeavour Drive and Avoca Drive including viewing deck at the end of Arden Avenue.
- Construct car parking area near Avoca water tower.



7.4 NORTH AVOCA

- Install trackhead and directional signage (Directional signage to be relocated as new sections of walkway are constructed).
- Install Information Boards near surf clubs.
- Construct North Avoca steps from the beach to Coast Road.
- Construct North Avoca lookout including associated landscape works.



7.5 TERRIGAL

- Install signage at start and finish and directional signage along existing trail (Directional signage to be relocated as new sections of walkway are constructed).
- Install Information Boards near surf clubs.
- Upgrade footpath along the Scenic Highway Terrigal.



8.0 FUNDING OPPORTUNITIES

Funding is integral to the development of the 5 Lands Coastal Walkway. Loans and grants are available from a number of sources to assist with capital works and improvements to the walkway. At the time of writing, available grants include, but are not limited to, the sources listed below.

Organisation Title	Grant	Details
Department of Resources, Energy and Tourism	TQUAL	Provides assistance for tourism based initiatives.
NSW Department of Planning	Metropolitan Greenspace Program	Grants to improve regionally significant greenspace for recreation purposes.
Department of Families, Housing, Community Services and Indigenous Affairs	Accessible Communities	Funding to improve infrastructure for people with disabilities.
Department of Regional Australia, Regional Development and Local Government	Regional and Local Community Infrastructure Program (RLCIP)	Funding available to stimulate growth and economic activity across Australia.
NSW Rural Fire Service	Bushfire Mitigation Works Fund	Assistance with fire prevention and mitigation measures.
Department of Environment and Climate Change	Environmental Trust	Supports restoration, rehabilitation, research and education programs.
Department of Communities, Sports and Recreation	Sport and Recreation Facility Grant	Community orientated sporting and/or recreational facilities.

9.0 REFERENCES

Andrews Neil Urban Design Group, 2011, *5 Lands Coastal Walkway Masterplan Report - Part A*.

